

milltimber - bielside - cults

NEWS

# mboc

Issue 154  
Feb - Mar - Apr 2012



I moved in with  
**MARTIN**

MARTIN & CO  
the UK's No. 1 letting agent

**Why are so many people moving in with MARTIN?** Is it the huge choice of properties, expert local knowledge, or hassle free service?

At **MARTIN & CO** we believe it's because we always go the extra mile. Maybe that's why so many people are moving in with us, and why we're the UK's No. 1 letting agent.

**Here are a few more reasons to move in with MARTIN:**

- We'll help find a property to suit your needs and budget
- We'll ensure the 'move in/move out' process is quick and easy
- We'll arrange viewing times to suit you, not us
- We'll always make sure our properties are in good condition
- We'll deal with the landlord so you don't have to
- We'll take care of all the legal stuff

**We'll find the right property for you**  
Contact your local Martin & Co office  
or log onto the website [www.martinc.co](http://www.martinc.co)

**MARTIN & CO**  
the UK's No. 1 letting agent

**01224 636500**  
123 Rosemont Place, Aberdeen AB25 2YH  
[aberdeen@martinc.co](mailto:aberdeen@martinc.co) • [www.aberdeen-martinc.co.uk](http://www.aberdeen-martinc.co.uk)

**50% Discount**  
on your Initial Fee  
New Landlords and Tenants  
Simply quote PNEF



'And good luck with 2012...' from the editorial team

It is that time of year again and so far we have been spared the horrors of last year's snow, but living in the North East of Scotland, we can never be entirely certain the winter is over until the end of May. One is reminded of the old joke when snow was reported on the Scottish hills in June. It was uncertain whether these were the last snows of the previous winter or the first snow of the next.

One item we are going to hear a lot about this year will be the Olympics. Despite the government (and the omnipresent Lord Coe) reassuring us all that this was going to be an inclusive 'UK' event, we do feel very distant from it. I sincerely hope that when the Olympic flame makes its way round the country, we will all feel a certain amount of pride regarding what has been achieved. As to spending those weeks in London with the almost inevitable 'logistical' difficulties, I suspect I may watch the highlights on telly. Are David Coleman and Frank Bough still doing, 'Today at the Olympics'? I suspect that some of our readership will have no idea who these redoubtable gents are.

Our current edition has a couple of items to which I would like to draw your attention. Marie Boulton and Alan Milne's article on the new Local Plan is simply jaw dropping. The numbers they mention are staggering and the whole thing has come into play without any ballyhoo to speak of. The effect of all these developments will be to put even more strain on the rapidly diminishing resources of our community. It could profoundly change the MBC area and Aberdeen forever.

The other piece concerns my comments on the new Lower Deeside Community Centre. This article explains the new 'self help' approach to adult learning. This system has been imposed on us with little notice, no budget and little assistance in dealing with a number of legal obstacles. It seems not to have been thought out at Council level and so it will be down to the ingenuity and hard work of those who are trying to sort this mess out that may result in the continued provision of popular adult education in our area.

Finally, travelling from the station by taxi recently I was informed that the word among the 'taxi community' is that the big house at the top of Baillieswells Road has been sold to a well known local hotelier and is to become a hotel and that surrounding woods are to provide parking space. If it is true then it is scandalous but we have the dubious satisfaction of knowing that you read it here first! (See MBC News No. 146 'Old dogs and new tricks' p. 26.)

Maureen McLennan

## Please don't grumble at us!

Please get writing if you want the newsletter to be a more interesting read. The deadlines for the next editions are:

**01 April for May distribution**

**01 July for August distribution**

**01 October for November distribution**

Send your copy as an email attachment and keep photos separate to: [mbcnews@cbmcommunity.org.uk](mailto:mbcnews@cbmcommunity.org.uk)

### OR POST TO :

**MBC News , c/o 11 Inchgarth Road, Cults,  
Aberdeen AB15 9NJ**

### Contact Details for MBC News Team :

861957	Editor (Maureen)
869502	Advertising (Tracey)
867571	Accounts (Phillip)
862262	What's On Locally (Eleanor)
318561	Layout (Sue)
868524	Distribution (Peter)

## Letters

Dear Sirs,

I have thought long and hard before sending the attached letter, as the only time I write is to complain. However having just walked back from the Post Office to the house, I lost count of the number of times I had to walk in the road due to some thoughtless individual blocking the pavement with their van or car.

As for illegally parked cars, one person drove on the right hand side of the road in order to park on the double yellow lines by the new Tesco. He then went and purchased a cup of coffee at Terroire and calmly walked back to the vehicle. And this an area where the local councillor told me people do get prosecuted for illegal parking. "Rubbish". If people knew they would get prosecuted, they would not do it. As it is, they just show their complete disregard for the basic rule of law.

Regards

Cults Resident

# A sad farewell to Max Lechner

The communities of Milltimber, Bieldside and Cults have been paying tribute to a cheerful, courageous and charismatic local schoolboy who tragically lost his brave fight for life during the Christmas holidays. Max Lechner, who was 11 and lived with his loving family in Milltimber, died after a short illness which began in early December.

The bubbly Cults Primary school pupil, who was a well known and recognized character throughout the area, was born with DiGeorge Syndrome and had overcome life-threatening problems when he was born. During his first few weeks of life, Max underwent major heart surgery but true to his character, he fought the odds and went on to enjoy a full and very active childhood.

In March 2009, Max once again faced a dangerous heart operation when his body outgrew the valve which was fitted at birth. He underwent several hours of surgery at Glasgow's Yorkhill Hospital but did not take long to recover and was back at his beloved school as soon as possible.

His devoted parents, Clare and Luddi, have described his "beaming personality" which brought great happiness to others, including his elder brothers Danny, 16, and Christian, 14, who both attend Cults Academy.

When Max first complained of leg pains and shivers in early December, his family thought he'd come down with a cold. However, when the symptoms worsened Max was admitted to Royal Aberdeen Children's Hospital where doctors confirmed that Max had contracted a staphylococcal aureus bacterium – a dangerous infection which had spread to his heart. Just days before Christmas, he was taken once again to Glasgow's Yorkhill Hospital where medical staff attempted to banish the bug from his body during five hours of complicated heart surgery. But, heartbreakingly, post-operative complications set in and Max developed a brain aneurysm. He passed away in the early hours of December 29<sup>th</sup>, with his mum, dad and big brothers cuddled around his bed.



Max's funeral was held at St Mary's Chapel in Blairs on Thursday 5<sup>th</sup> January and was attended by around 400 family, friends, teachers and schoolmates. Cults Primary School Headteacher Iain Smithers and his staff are also holding a special "Celebration of Max's Life" for all pupils and Max's family at the school. Max's great loves will all be mentioned – football, friends, family and FOOD!

**Max loved life and laughter. He was much loved and will be deeply missed by all who knew him. Donations can still be made in Max's honour to his charities - the Max Appeal ([www.maxappeal.org.uk](http://www.maxappeal.org.uk)) which supports families affected by DiGeorge Syndrome, and Ronald McDonald House ([www.rmhc.org.uk](http://www.rmhc.org.uk)) which provides free 'home away from home' accommodation at hospitals in the UK.**

## Help Needed To Deliver the MBC Newsletter

Thanks to all who helped deliver the latest edition of the MBC Newsletter No.153. A few of our volunteers have decided to take a well earned rest from delivering the Newsletter. We thank them for their past support, and we are seeking some new volunteers to help out. The areas where we have a gap are:

a) Baillieswells Road around 60 copies - could be

shared between two people

b) Primrosehill Road, Den of Cults, 3 Grasstops - around 25 copies

c) Local schools, shops and community offices - around 80 copies - could be divided between two people.

**Delivering the MBC is a great way to get some exercise and fresh air. If you would like to help out please contact Peter Roberts on 868524.**



# News from the Cults Bielside and Milltimber Community Council

Scottish Reporters endorse Local Development Plan  
Scottish Reporters announced their findings on the Local Development Plan just before Christmas. In essence they approved the Local Development Plan with a few, very minor, amendments. The Community Council had expressed concerns about the plan, including:

- the scale of housing development across the city particularly in the current economic climate
- The ability of the local authority to align house building to the delivery of the infrastructure (schools, roads etc.)

The Reporters' view is that there is sufficient regulatory control through legally enforceable planning conditions and planning agreements. We remain deeply sceptical given that these controls are still to be negotiated with the Developers and the City Council's track record on delivering the infrastructure at the right time, the right place and to the right quality and cost standards does not inspire confidence.

We are pleased that the Reporters have supported the City Council's proposal to return Loirsbank in Cults to Green Belt. However, this is after the Planning Committee decided to approve a planning application for eight houses

under the current LDP. This was despite the full council previously voting to retain the whole site as green belt in the latest plan. There is little evidence of consistency of approach in planning matters.

We were disappointed that the North Garthdee Farm development has been approved for housing without provision for a link road between North Deeside Road and Garthdee Road. The link road was supported by the Community Council, Ward Councillors and many local Residents. Given the anticipated increase in traffic congestion at the river Dee, (34% increase in traffic volumes over 2010 levels by 2030), 10 options have been developed by Transport Scotland for a new bridge over the river Dee. One option included the link road which, like the other nine options, requires further engineering and financial feasibility studies. It appears that this option will now no longer be possible unless the link road is addressed when a detailed planning application is presented by the Developers for the site.

It is another example of the leadership of Aberdeen City Council taking a short-term view and not listening to the views of the local community.

with **you**  
every step of the way

marine law  
employment law  
private client law  
property law  
commercial law

379 North Deeside Road, Cults, Aberdeen AB15 9SX  
Tel: 01224 868687

Ballater Road, Aboyme AB34 5HN  
Tel: 013398 87665

14 Carden Place, Aberdeen AB10 1UR  
Tel: 01224 632464

www.mackinnons.com

**mackinnons**  
solicitors

50% Discount  
Ends February 29th 2012

**Jeans Too Tight?  
Love Handles Escaping Over The Sides?  
Time To Lose Weight?**

New For 2012  
**Hypnotic Gastric Band**

**Phone Now For A Free Consultation.**

Forder Hypnotics  
Maria Forder AMIH  
Professional Hypnotherapist  
Contact: 07824395671  
E-mail: [forderhypnotics@gmail.com](mailto:forderhypnotics@gmail.com)

Draft Masterplans for Friarsfield (Cults) and Oldfold Farm (Milltimber)

In November 2011 there were further public exhibitions on the housing developments at Friarsfield (280 homes) and Oldfold Farm (550 homes) at the Cults Hotel and the Waterwheel Inn respectively. At the end of December/beginning of January the Developers submitted draft masterplans for these sites to Aberdeen City Council. Representatives from the Community Council together with members of the Milltimber Community Association and the Murtle Den Group met with the City Planners on 10th January. We were invited by Sandy Beattie, Head of Masterplanning for the City, to comment on the consultation process. This was in advance of him preparing a report for the Infrastructure and Planning Committee of the ACC who will be reviewing the masterplanning process for these sites at the end of January 2012.

We only had a few days to look at the masterplans and indeed the additional community views expressed at the November public meetings were not included in the drafts. However, the Developers did attempt to highlight the matters raised during the previous public consultation meetings but the draft masterplans did not set out how they were going to address the most contentious issues. There appeared to be some reduction in the housing density at Oldfold Farm and both masterplans set out the phasing of the developments. There were no clear timeframes for the delivery of the house building as this will be dependent on the ability of the Developers to sell the new homes.

The scale and type of affordable housing remains unclear other than a general reference to the 25% quota for Oldfold Farm. The concerns about the primary schools and the capacity at Cults Academy are unresolved. The provision of a new primary school at Milltimber only comes at stage 4 of the phasing by which time 300 homes should be built. No traffic assessments are included in the masterplans and more detailed work is needed on road junctions. The timing of the new road network supporting Friarsfield and its funding is not clear. Many of the more specific infrastructure issues; drainage, community facilities etc. are alluded to but not defined in terms of cost and delivery.

We understand that the next step is the review of the masterplans by the City Council and we anticipate they will be adopted, despite the absence of detail. This enables the City Council to approve the masterplans across the City prior to the formal adoption of the Local Development Plan probably in March or April 2012. Following the approval of the masterplans, the Developers will submit detailed planning applications for their sites. We believe that they will submit as many planning applications as

possible prior to the May elections to ensure they are approved by the existing administration. They cannot be rescinded once approved.

The Community Council can only encourage local residents to be vigilant about the planning applications. It will require as many people as possible including the Community Council, to express their views particularly on schools, roads, affordable housing and specific issues surrounding the sites to facilitate any changes to the proposals that emerge from the Developers.

Waste Recycling Centre at Hazelhead Park  
The City Council has approved the building of a new waste recycling centre at Hazelhead Park. The CBM Community Council along with others CCs across the City objected to this proposal. Apart from the traffic considerations, the construction of a waste recycling centre close to a public park is wholly inappropriate. It is a further example of the leadership of Aberdeen City Council not listening to the views of local residents. Indeed on this occasion it extends to residents across Aberdeen.

Peter Reiss

Chairman of Cults Bieldside Milltimber Community Council

## **Community Council Members**

### **Contact Details**

Peter Reiss (Chair)	734592
Guus Glass (Secretary)	864925
Graham Payne (Treasurer)	868827
Christine McKay (Planning Liaison Officer)	867479
Eleanor Brennan	862262
Gillian Buchanan	865125
John Etchells	867235
Martin Harris	868580
Harriet North-Lewis	868595
Andy Pyle	868060
Anne Rae	864646
Derek Robb	868797
Nigel Williams	862639

**Email: [cbmcc@cbmcommunity.org.uk](mailto:cbmcc@cbmcommunity.org.uk)**

**Mail address :** Community Council, c/o Secretary, 5 Millden Road, Cults AB15 9LJ

Other useful contact details

- Cllr Marie Boulton 522178 / 734712
- Cllr Aileen Malone 522356 / 862189
- Cllr Alan Milne 523148 / 867816
- Police (non emergencies) - 0845 600 5700

**Upcoming CBMCC Meetings**  
**4th Thursday of the month (not July or Dec)**

**All meetings are 7pm – 9pm**  
**All are welcome to attend**

# Update on Lower Deeside Community Centre

This used to be known as 'Cults Community Centre' and was run by the local Council. However, it and other similar centres are victims of the Council's strategy to reduce spending on services aimed at local communities. With this in mind, the Council requires local people to form 'steering groups' to manage their local facilities and to run them for the benefit of the community to maintain such services, including pre and post school child care support, adult learning, provision of mini bus for local club use and adult and child sporting and other leisure activities. (See MBC News 153).

The path has not run at all smoothly to date and not because of any fault on the part of the local individuals who have tried to ensure continuity of service provision. The Council have not really provided any proper support to this new method of delivering these very popular services.

It is disappointing to note that despite the first meetings being held by the Council in May 2011 and the Council having a stated goal of implementation in March 2012, little, if any, real progress has been made. At the time of writing the Council has yet to provide any form of management or lease or child service care form of agreement that they state they require the local community organisations to enter into to have continued access to schools and other facilities, despite the Steering Group having provided agreements in Autumn 2010. On their performance to date it is not at all clear how the Council propose to implement in March this year unless the current temporary arrangements continue.

The Councils lack of a coordinated approach can be seen in relation to that for adult learning. Within the last couple of months the majority of the adult tutors for the Cults classes have been made redundant and this has given the Steering Group a major headache. It cannot legally employ staff at the moment and the Council bureaucracy means that the tutors cannot return to work for a period of time. It is hoped that this anomaly will be sorted by the end of March, but that is not certain.

One practical 'fix' that is being considered at the moment is to create an extended break between the teaching blocks to try and deal with the problem of properly engaging the adult tutors. A letter will be sent to students explaining the situation shortly.

On a positive note, Enrica Conti (Italian language tutor) has already arranged for classes to run from Deeside Community Church (tel. 863964 for info). We all hope that this model will be followed by the more enterprising tutors and that adult tuition will again be an important aspect of life in the 'MBC' area.

At present it is hoped that other classes will restart after Easter, but we may all decide to learn Italian with our fantastic local teacher!

In the meantime, keep using the swimming pool and other facilities at Cults Academy or we may lose them as well!

**Maureen McLennan for Steering Group**



**Thank you to all our customers for your continued support and look forward to seeing you in the new year**



- Semi-permanent affordable extensions
- Free consultations

**Anjools is a modern friendly salon based in Cults with passionate stylists and a combined 37 years experience. We pride ourselves on offering a personal service using only the highest quality L'anza and La Biosthetique products. All stylists receive on going training to ensure we stay ahead of the latest trends and techniques.**

**OPENING TIMES**

Tues	10am - 8pm
Wed	10am - 7pm
Thurs	9.30am - 6pm
Fri	9.30am - 6pm
Sat	9am - 4pm
CLOSED Sun & Mon	



14A SOUTH AVENUE, CULTS, ABERDEEN AB15 9LP  
TELEPHONE: 01224 863633



## Garden & Landscaping Services

**Gardens & Lawns**

**Hedges, Paths, Fences, Patios & Decking**

**Garden Design & Landscaping Projects**

**Commercial & Residential**

**Friendly & Professional Service**





**Free Estimates**

**Contact Moira on 013398 82496**

**[www.classicabode.co.uk](http://www.classicabode.co.uk)**






## St Devenick's Church Bielside

Find us on the main North Deeside Road at the corner of Baillieswells Road, by the traffic lights.

Everyone is welcome.

Our aim: to know God and to make him known.

### Re –Imagining Church

A good question for churches to ask themselves about any given activity or practice is... 'if we were not already doing this, would we start now?' Would we choose morning as the time for our main service if we were starting church today in the early 21<sup>st</sup> century? For most families this is the only time in the week when they can guarantee being together... so perhaps Sunday morning is not an ideal time to expect families to check out church. We have found that Sunday afternoon seems to suit some people and hence our Messy Church runs then (3<sup>rd</sup> Sundays, 3.30-5.00pm).

This and similar fundamental questions are what we will be looking at on Tuesday evenings as we look at 'Reimagining Church'. The principles of what our church stands for will not change as we take our guidance from the Bible, but the form in which we express these is another matter altogether. It will be a great discussion to have and we hope as we move into spring and a new year that we will discover new, fresh ways of being a church. Perhaps you'll like what you see...??

### Talent Auction

Sat, 18<sup>th</sup> Feb. 7.00pm Church Hall

### Easter programme:

Sun, 1<sup>st</sup> April 10.30am Palm Sunday

Fri, 6<sup>th</sup> April 10.30am Good Friday

Family Service

Sun, 8<sup>th</sup> April 10.30am Easter Sunday

### Weekly worship

#### On Sundays

8.30am Holy Communion

10.30am Main Sunday service

1st Sunday of the month:

Family Service

2nd and 4th Sunday of the month:

Holy Communion

3rd and 5th Sunday of the month:

Morning Worship

**Crèche and Youth Church** for 11+ run at the same time as the main service on Sunday mornings.

#### On Thursdays

10.30 am Communion in the Lady Chapel

#### Sunday Club:

This is run by our dedicated team every Sunday except the first of the month from 10.30-11.30am in the church Hall for children of primary school age. Parents can go shopping, have a coffee... or if they want to even join us for the service.

#### The Mix

For young people from age 10 upwards

On Saturday evenings in term times, except the last Saturday each month.

If you would like information about us or any of our activities, please contact

Paul 01224 861552

email [paul@stdevenicks.org.uk](mailto:paul@stdevenicks.org.uk);

or the Church office 01224 863574, (open Mon, Wed and Thu mornings during school term)

email [office@stdevenicks.org.uk](mailto:office@stdevenicks.org.uk);

or [www.stdevenicks.org.uk](http://www.stdevenicks.org.uk)



## THE BLUE DOOR


charity shop

57-59 North Deeside Road, Bielside Tel: 01224 861830  
Open Wednesday to Saturday, 10am to 4pm

CHASE AWAY THE WINTER  
BLUES - *Come in and see*   
*us for a REAL bargain!*

FRIENDS OF CAMPHILL MEDICAL PRACTICE  
Registered Scottish Charity SCO35583

## Neighbourhood Watch



The AGM of Lower Deeside NWA will be held on 19th January. That will be in the past by the time you read this, but for a copy of the minutes email me on [grampiannwa@sky.com](mailto:grampiannwa@sky.com). An update of the 'Update of Local Policing' for Hazlehead was posted outside Cults Library and a copy is filed in the local information section.

Dave 861176

## Bruce Decor Limited



Painting and Decorating Service

1st Choice for all aspects of painting and decorating  
Commercial and Private work undertaken  
Specialists in Wallpaper Hanging  
Quality workmanship guaranteed  
Over 25 years experience

Telephone Kingswells : 01224 - 279459 or 07940 012679

E-mail : [brucedecorltd@btinternet.com](mailto:brucedecorltd@btinternet.com)

## WINDOW CLEANER

In MBC area since 1983



Licence/ Insurance  
Free estimates  
Sills Clean included  
Roof Gutters  
Cleared

Tel: Gordon or Paul  
01224 - 825565 or  
07762 149712  
[clean33@talktalk.net](mailto:clean33@talktalk.net)

## AVAILABLE TO RENT - BEAUTIFUL HOLIDAY VILLA IN SOUTH EAST SPAIN

This 2 Bedroomed, 2 Bathroomed attached villa on a 5 Star Golf Resort at Hacienda del Alamo, is just 40 minutes drive from Murcia Airport/or 80 minutes from Alicante Airport. The traditional town of Fuente Alamo is just 5 minutes drive away. The property has Air conditioning, Stone built BBQ in the pretty garden, is just steps away from the communal pool and is fully furnished to a high spec.

For further details and rates  
please email: [jan@murciagolfing.com](mailto:jan@murciagolfing.com)

## Jacqueline Zuurendonk

BsC, MCSP

CHARTERED PHYSIOTHERAPIST

Sport Physiotherapy  
Back-Neck Injuries  
Cranial Sacral Therapy

Telephone : 01224 - 865690

## News from Councillors Boulton and Milne

Happy New Year

Thankfully we were spared the snow conditions of last year which added extra pressures on public services and shoppers trying to get organised for Christmas. We feel sure that we will not have escaped the snow altogether but the Council has the necessary salt/grit stocks in place and gritters standing by, to deal with it when it arrives. There are grit boxes available throughout the city for use by the general public, which will be constantly refilled. Should the box near you become empty however, please call 0845 608 0919 to get it filled.

The Aberdeen Local Development Plan has been approved by the Scottish Government Reporters with only minor alterations. What does this mean for our area and Aberdeen as a whole? The summary of the plan is as follows: (please see opposite page).

The good news for the residents of Loirsbank was that the Reporter upheld the Council's recommendation to return the remaining area at Loirsbank to Greenbelt. However, there was bad news for campaigners for a link road from Inchgarth Road to North Deeside Road who had hoped to see the site at Garthdee Farm used to facilitate the link road. The Reporter ruled that the area should continue to be zoned for residential development. We're sure the campaigners will be considering their options and continuing their fight.

There are large expansion plans for Aberdeen City with a current plan which will see the number of dwellings increase by up to 29,801, an increase of 26.9%, with a further 6,000 to be site allocated by 2030. Swathes of land have also been allocated for major industrial/business parks. The concerns raised by many have been with the infrastructure required to support such vast development, things such as roads, sewers, schools, doctors, to name but a few. Where will they be provided and when; particularly given the current financial climate, which looks set to be with us for some time to come. 'Master Planning' has been introduced, which will allow engagement with communities where the public and community councils can have their say on how they would like any development to look and what would be needed in their view of infrastructure. How much influence the public will have on the final outcome and in particular the timing of the delivery of infrastructure, including community facilities, remains to be seen. The Master Planning that has taken place with regards to the Oldfold Farm Development has seen two rounds of discussions and a reasonable amount of positive negotiation, which has resulted in major changes to the developers' original proposal.

Development Frameworks for Oldfold Farm at Milltimber and Friarsfield at Cults are coming to the Enterprise, Planning & Infrastructure Committee on the 31st January 2012, as the first part of the planning process. We will of course bring you any updates in these developments in the next MBC News. Anyone wanting more information before then, can contact any of the Lower Deeside Councillors, the Council Planning Department or the Community Council who are also very involved.

We are continuing discussions with Council Officers over concerns on the capacity of our schools on Deeside, particularly Cults Academy where there have already been issues over children 'in-zone' not being able to get in; we will keep you updated on the situation.

We have concentrated on the Local Development Plan in this article as we believe it has a major impact both locally and city wide and we want to ensure that everyone is fully aware of what the future holds.



Marie Boulton  
Inde-



pendent Alliance  
Alan Milne  
Independent Alliance



Development at Dyce, Bucksburn and Woodside

Sites	Local Development Plan period	2017 – 2023	2024 – 2030	Future Growth
OP24 Stoneywood	2007 – 2016	500 homes	-	
OP26 Craibstone North and Walton Farm	1.5 ha employment		18.5 ha employment or higher education and research	
OP28 Rowett North	34.5 ha employment			
OP29 Craibstone South	750 homes	250 homes		
OP30 Rowett South	1,000 homes	700 homes	240 homes	
OP31 Greenferns Landward	750 homes	250 homes	500	
OP135 Woodside	300 homes			
Housing Total	3,300 homes	1,200 homes	740 homes	
Employment Land Total	36 ha		18.5 ha	

Development at Kingswells and Greenferns

Sites	Local Development Plan period	2017 – 2023	2024 – 2030	Future Growth
OP40 West Hatton and Home Farm, Kingswells	2007 – 2016	50 ha employment	-	2024 – 2030
OP41 Kingswells C	50 homes	-	-	-
OP42 Kingswells D and West Huxterstone	120 homes	-	-	-
OP43 Maidencraig South East	450 homes	-	-	-
OP44 Maidencraig North East	300 homes	-	-	-
OP45 Greenferns	600 homes	350 homes	400 homes	
OP46 East Arnhall	10 ha employment	-	-	
Housing Total	1,520 homes	350 homes	400 homes	
Employment Land Total	61 ha			

Development at Loirston and Cove

Sites	Local Development Plan period	2017 – 2023	2024 – 2030	Future Growth
OP69 (part)	2007 – 2016	2ha employment		
OP77 Loirston	1100 homes	400 homes	-	
OP78 Charlestown	11 ha employment	-		
Housing Total	1100 homes	400 homes	20.5ha employment	
Employment Land Total	13 ha		20.5ha	

Development at Deeside

Sites	Local Development Plan period	2017 – 2023	2024 – 2030	Future Growth
OP59 Peterculter East	2007 – 2016	25 homes	-	2024 – 2030
OP60 Culter House Road	5 homes	-	-	-
OP61 Edgehill Road	5 homes	-	-	-
OP62 Oldfold	400 homes	150 homes	-	-
OP64 Craighton Road / Airyhall Road	5 ha employment	-	-	-
OP65 North Garthdee Farm	20 homes	-	-	-
OP134 Peterculter Burn	80 homes	-	-	-
Housing Total	19 homes	-	-	-
Employment Land Total	554 homes	150 homes	0 homes	
	5 ha	-		

Development at Countesswells

Sites	Local Development Plan period	2017 – 2023	2024 – 2030	Future Growth
OP58 Countesswells	2007 – 2016	2,150	850	2024 – 2030
Housing Total	10 ha employment			-
Employment Land Total	2,150 homes	850 homes	-	
	10 ha			

Development at Bridge of Don and Grandhome

Sites	Local Development Plan period	2017 – 2023	2024 – 2030	Future Growth
OP2 Murcar	2007 – 2016	60homes	27 ha employment	2024 – 2030
OP10 East Woodcroft North	2600 homes	2100 homes	2300 homes	
OP12 Grandhome	5ha employment			
OP25 Dubford	550 homes			
Housing Total	3210 homes	2100 homes	2300 homes	
Employment Land Total	5ha		27ha	

# Aberdeen Local Development Plan...



## Affordable computer support for your home or business needs

- ☞ Virus and spyware removal
- ☞ PC healthchecks
- ☞ System start up issues
- ☞ Laptop repairs - power, screens, keyboards
- ☞ Internet & email setup
- ☞ Wireless networking and security
- ☞ Hardware and software upgrades
- ☞ Data backup and recovery

**Call now on 01224 531166**  
**visit [www.contlaw.co.uk](http://www.contlaw.co.uk) or**  
**email [andrew@contlaw.co.uk](mailto:andrew@contlaw.co.uk)**

# St Devenick's Playgroup and Rising Fives



A big hello from all the children and staff. The playgroup continued its theme of health and wellbeing last term. The topic has really captured the children's imagination and they have thoroughly enjoyed exploring lots of different aspects of wellbeing including exercise, healthy eating and other ways to keep fit and well. The subject has been such a success that the playgroup has entered into the running for the new Aberdeen City Early Years Health and Wellbeing award – we all have our fingers crossed that the staff's hard work will be recognised!

The Forestry Commission has very kindly undertaken some work to further improve the Playgroup garden so we would like to say a big thank you to them for their fantastic help. The children and staff are enjoying the benefits of their hard work and get out in the garden as much as possible. With spring just around the corner this years planting will soon begin.

Although it seems a long time ago, last year's Christmas Concert was a triumph with everyone singing their hearts out followed by a special visit from Santa. The Committee is hosting a new fundraising event this term – a Ladies Pamper evening. So if you fancy spoiling yourself after the Christmas rush, please call Suzanne on 741318. It promises to be an excellent evening with lots of different treatments and experiences available.

Every Wednesday 2-4pm, St Devenicks Playgroup also offers a Mother and Toddler Group run by one of the playleaders Karen. It is a warm and friendly group offering physical play, puzzles, craft, songs, a range of baby and toddler toys, shared snacktime and most importantly, the opportunity for you and your child/ren to socialize and meet new people. Please come along and join us; bumps to 4 yrs welcome and your first session is free (£2.50 thereafter). Just pop in, we are situated in the St Devenicks church hall or give me a call on 07956782805 (Karen). We look forward to seeing you :)

St Devenick's Playgroup is based on Baillieswells Road, Bieldside. Playgroup sessions run from 9.20 to 11.50 on Monday to Friday with lunch club on a Wednesday. Rising Fives sessions are from 12.30 to 3.00 on Tuesday and Thursdays. If you would like to find out more about Playgroup or Rising 5's, please call playgroup on 07931 223545 or Julie on 868644.



**Scottish Renewable Energy**



**Renewable energy made from air dried softwood timber**  
**No trees felled directly for production**

## Kindling & Firewood

**Ideal for**

- open fires
- stoves
- ovens
- chimeneas

**Competitively priced & available for immediate collection from our showroom on Sinclair Road!**



**Only 3 Minutes from Union Square!**

Produced by: Cordiners Wood Energy a trading name of James Cordiner & Son Ltd  
 Tel: 01224 877811 (opt 3)  
 Email: [woodenergy@cordiners.com](mailto:woodenergy@cordiners.com)

**[www.cordiners.com](http://www.cordiners.com)**

**Fencing & Decking**



## Fencing

Ready to install fence posts and boards available in green and brown. Standard sizes in stock or we can cut to any size you require and deliver to your door.





## Decking

Treated decking boards ready to install, and a full range of hand-rails and spindles in stock in our Aberdeen showroom.

**Visit our showroom on Sinclair Road to see a large display of products or call 877 611 for a free quote!**

Sinclair Road, Aberdeen, AB11 9PJ  
 Tel: 01224 877811 (opt 1)  
 Email: [timber@cordiners.com](mailto:timber@cordiners.com)

**[www.cordiners.com](http://www.cordiners.com)**



News from Councillor Aileen Malone

A Happy New Year. I hope everyone had a lovely Christmas.

### Safe Walking to School

I am a great supporter of safe walking to school initiatives. Work to drain and resurface around 200 metres of pathway has been carried out next to Cults Primary School. This is Path 55 in the Council's Core Path Network. I had complaints that it was muddy and needed attention. I am grateful to Greenspace Volunteer Group who worked two days a week on this project. The path is well used by school pupils and I hope that the upgrade work will encourage more to use the path.

We have been running our hugely successful Walk once a Week "WoW" scheme since 2005. This rewards children who walk at least once a week with collectable monthly pin badges. You can see this year's badges and the other resources we offer, including wallcharts and certificates, at [www.walktoschool.org.uk/order](http://www.walktoschool.org.uk/order). Orders are now open for next term and you can choose as many as you like. We also have a 'one week walking challenge' available year round. This is particularly popular during Walk to School Week in May.

### Friarsfield Road –Jacob's Ladder

I was delighted to have secured funding to have Jacob's Ladder resurfaced in November. I use this route daily on my way to the office and like everyone else was frequently met by cars trying to miss the potholes. We still have the snow and ice to contend with; and of course the occasional careless motorist.

### Update on Allan Park and the pond

Allan Park is one of the special features of our area. Local people have been disappointed in its declining condition. There are complaints of fallen trees and a lack of care. I asked the Council's Environmental Team for help and they have agreed to do some improvement work. They advise that pond is in fairly

good condition for wildlife and plants. The willows on the island are healthy and do not need attention. However, some of the reeds and edges need to be removed to allow in more light and air. This will require careful work with an excavator and removal and composting of the debris. The path may then need some cleansing and re-instatement, especially the part leading down from the road which is taking a lot of water. The steps from the entrance down to the pond need a good clean and top up with sub base and dust. The handrail is rusty and rough at the bottom end although it has been painted recently. I would like to see the interpretative panel replaced in the empty cairn. These are all clear priorities for action and I have strongly supported an application to Aberdeen Greenspace for funding and adoption. Greenspace will consider this project in March. The pond project would be for action in autumn. In the meantime, tree and shrub works can be done by spring. Some improvement works can also be done with painting, repairs, sprucing up play areas etc.

### Winter Maintenance Plan

As recent winters have been very tough, the Council is trying to be prepared for snow and ice conditions. I am always keen to ensure that gritting is done quickly and where it will make a difference. Please let me know if I can help in any way. Up to date information on the Winter Maintenance Operation is available online at: <http://www.aberdeencity.gov.uk/gritting/>

### Getting things done

Please contact me if you have any comments, suggestions or questions and I will do my best to protect and improve our local quality of life. My contact details are as follows:

Councillor Aileen Malone  
Town House , Broad Street, Aberdeen AB10IFY

Direct Dial: 522356, Home: 862189  
Email: [amalone@aberdeencity.gov.uk](mailto:amalone@aberdeencity.gov.uk)



## Exercise Classes

### FRISKIS&SVETTIS

Aberdeen

**Keep Fit - Exercise to Music**  
**Improve Fitness, Flexibility and Strength**  
**Have fun !**

**Hillview Community Church – former IBC, Cults**  
**Monday, Wednesday, Thursday & Saturday**  
**See listing at back of MBC News for class times.**  
**Visit [www.FSAberdeen.co.uk](http://www.FSAberdeen.co.uk) or phone 01224 861450**



### Camphill Early Childhood Centre

Open Mon to Fri: 9.30am - 12.30pm  
Ages: 3 to 5 years

- ◆ Purpose-built Kindergarten
- ◆ Sensory forest
- ◆ Weekly artistic & craft activities
- ◆ Well-trained and Qualified staff
- ◆ Children with additional needs welcome
- ◆ Large, outdoor play area
- ◆ Homely atmosphere
- ◆ Part-funded places available
- ◆ In partnership with Aberdeen City Council & the CHILD CARE VOUCHER SCHEME

For further information or to arrange a visit please contact -  
Tel: (ABERDEEN) 01224 - 865893 E-mail: [amber@crss.org.uk](mailto:amber@crss.org.uk)  
Online: [www.camphillschools.org.uk/page/amber-kindergarten](http://www.camphillschools.org.uk/page/amber-kindergarten)



## CULTS LAWN TENNIS CLUB



- Friendly local club
- Excellent facilities including 6 floodlit artificial grass courts
- Professional coaching team headed by Gareth Rennie
- Extensive coaching programme available throughout the year for all members (Junior and Senior)
- Weekly session for both social and competitive players
- Social events and club tournaments

**Contact the Secretary Maggie MacLennan on 861485 for membership details**  
**Contact the Coach Gareth Rennie on 07714753607 for coaching details**  
**[www.cultstennisaberdeen.co.uk](http://www.cultstennisaberdeen.co.uk)**

# Grampian Fire and Rescue Service



In the last five years there have been 18 house fires within the Miltimber, Bieldside and Cults area. An interesting fact is that unlike the majority of other Grampian areas, unattended cooking wasn't the most common source of ignition, although there were six incidents. The main cause of fire in exactly 50% of cases was attributed to damaged electrical wiring or a fault with an electrical appliance.

There are various ways in which electrical fires can be prevented. Electrical cables that are attached to household items should be checked to see they are in good condition, showing no visible damage and the correct rated fuse is in the plug.

Electrical repairs should be carried out by a qualified electrician and large appliances such as washing machines, tumble dryers and dishwashers should never be left on a cycle before going to bed or leaving the house.

If a problem does occur with an electrical appliance it usually results in a smell of burning that the occupier might detect or it may set off a smoke alarm. The item may start making an unusual noise. When this happens a fire is normally prevented by switching off the appliance and getting it checked out. If nobody is around to notice these signs, the problem can escalate and result in a serious house fire.

Another indication that an appliance may be faulty is when an RCD switch keeps tripping off on the electrical consumer unit. This should be checked out by an electrician if this is happening.

In order to achieve a better understanding about domestic electricity this link provides excellent advice:

[www.dontgivefireahome.com/fire\\_safety/1351.html](http://www.dontgivefireahome.com/fire_safety/1351.html)

Lastly, the loading placed on a socket can cause a fire if the demand is overdrawing the supply. Look for this image at the above link and use it to calculate what is safe to be plugged in together and find out the appliances that need a socket solely for themselves.

We hope this information is useful to you but please remember that it is essential to have working smoke detectors, which should alert you in the very early stages of a fire, enabling you to escape to a place of safety.

## CULTS MEDICAL GROUP

Firstly may I take this opportunity to wish you all a Happy and Healthy 2012? We would like to thank all our patients who handed in presents to both staff and doctors over the Festive Period. This is very much appreciated.

Our seasonal flu campaign has once again been a great success, with over 78% of patients over 65 receiving a flu vaccination. I would like to thank all the nursing and admin staff involved as it is and continues to be a huge task.

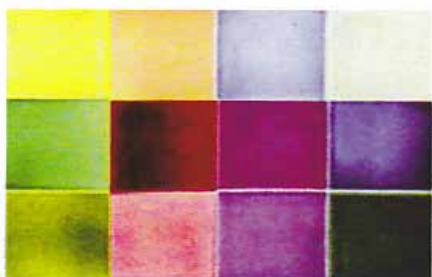
We are once again heading to the end of the contract year and are working hard to fulfil our requirements. We are reviewing patients with diabetes, asthma, hypertension etc so please do attend the clinics when invited in.

Cults Medical Group are now offering non urgent, routine appointments outwith normal surgery hours three evenings per week. We hope that this will be helpful for those of you who are unable to attend the surgery during the day.

Finally we would like to congratulate Dr Booth on the birth of his daughter Osla. Mum and baby are doing well.

Tracey Wilson  
Practice Manager

### GARRY YULE CERAMIC TILING



BATHROOMS, KITCHENS  
CONSERVATORIES  
WALLS AND FLOORS

*Full Bathroom Installation Available*

**T 01224 735559**

**M 07866 758687**

[garryyuletiling@aol.com](mailto:garryyuletiling@aol.com)

FREE ESTIMATES  
ALL WORK GUARANTEED

## "Get Your Kids In On The Act!"



Weekly classes in:  
DRAMA - DANCING - SINGING - THEATRE  
working towards highly acclaimed  
Theatre and Term productions  
and encouraging:  
CONFIDENCE - DISCIPLINE - TEAMWORK

Classes held in Aberdeen City Centre

Call us NOW to enrol your child!

[www.phoenixaberdeen.co.uk](http://www.phoenixaberdeen.co.uk)  
[info@phoenixaberdeen.co.uk](mailto:info@phoenixaberdeen.co.uk)

22 Balfourswells Road, Bieldside, Aberdeen, AB15 9BB

**01224 863946**

# Cults Hillwalking Club

Perhaps it was the alternative of going Christmas shopping or those so organised that their presents were all bought that made just over 40 club members, including a few guests, sign up for the December walk. The **Hill of Fare** had been on the programme for the previous two years but inclement weather and conditions had forced postponing even this relatively easy walk to this year.

Weather for the day was fair, (pun intended)! Thoughts though look ahead to the new year programme and this is already fixed, weather and conditions permitting up until August and can be viewed on our website at <http://www.cultshillwalkingclub.org.uk> where details of the club walks and other activities can be seen.

New members are always welcome. Why not come along and see for yourself what a varied programme we offer. For more information contact Chairman, Andy Roberts on 01224 733710,

[andyroberts@hotmail.co.uk](mailto:andyroberts@hotmail.co.uk)

or Membership Secretary John Adams on 01224 868402 [john@adamsnet.co.uk](mailto:john@adamsnet.co.uk)



Evening meeting		Sunday Walk	
Cults Community Centre 7.30 pm		Various pick up points	
25 February	<b>Ceilidh at Kippie Lodge 7.30 for 8.00 pm</b> Why not come with friends. No boots required!		
1 March	<b>Bees</b> Talk by Alan Bowman	11 March	<b>Glen Prosen to Glen Isla</b> 14 or 17 km
5 April	<b>Stories about Glen Muick</b> Talk by Joan Anderson	15 April	<b>Lochnagar</b> 19 or 22 km
4 - 7 May	<b>Weekend Away in Skye</b>		
10 May	<b>AGM</b> Followed by Wine & Cheese Party	13 May	<b>Buck of Cabrach</b> 13 or 18 km

## For a healthy life, shop at NEWTON DEE STORE, BIELDSIDE

Choose from our extensive ranges of  
honey; tea; wholefoods; herbs and spices;  
organic/ gluten-free/ dairy-free products;  
fresh organic fruit and vegetables;  
Weleda medicines; Dr Hauschka baby care products;  
environmentally friendly cleaning products and many others...

### Opening Times

Monday: 12noon – 5pm

Tuesday – Saturday: 10am – 5pm

Sunday: Closed

Find us at Newton Dee Village, Old Ferry Road, Bielside  
Telephone: 01224 868609 Email: [newtondeestore@btconnect.com](mailto:newtondeestore@btconnect.com)

## Oliviu Docea

Painter and Decorator

General Property

Maintenance

Tel : 01224 - 740276 (evenings) Westhill

Mob : 07913 082637



## ARDENE HOUSE VETERINARY PRACTICE

PROVIDING FIRST RATE MEDICAL CARE  
FOR ALL YOUR PETS

ROUND THE CLOCK EMERGENCY SERVICE

VET AND NURSE ON SITE 24 HOURS A DAY

ROUTINE MEDICAL CARE AND  
VACCINATION FACILITIES

ULTRASOUND SCANNING,  
ENDOSCOPY, X-RAYS

VISITING SPECIALISTS IN CARDIOLOGY,  
OPHTHAMOLOGY AND DERMATOLOGY

INTERNAL MEDICINE  
& ANIMAL BEHAVIOURIST

FREE PARKING AT ALL SURGERIES

**Veterinary Surgery**

Skene Road, Kingswells, Aberdeen, AB15 8PJ

Tel: 01224 740700

**Veterinary Surgery**

Unit 1 Jesmond Rd, Bridge of Don, Aberdeen

Tel: 01224 826121



## Rotary Club of Aberdeen Deeside

Rotarians were active in the Milltimber community in the run up to Christmas when 12 of our members attended the Carol Singing outside the Cults hotel and assisted with the marshalling of the event and passed round mince pies. Many generous people contributed to a collection in aid of Voluntary Service Aberdeen. Local school children also filled Christmas shoeboxes for distribution to those with little chance to receive presents in other countries.

The Club is very proud to have completed its water project to provide clean, running water to a maternity hospital and health centre in Uganda. This is something we have been working on in co-operation with a Ugandan Rotary Club for a number of years and the successful conclusion of the project should help to save the lives of many mothers and babies in the years to come.

The start of 2012 sees us looking forward to many activities. Our Charity shop in February, our annual Art Event in May, our involvement with local schools in for example our annual Primary School Quiz, our funding of a young leadership programme for two local youngsters, our sponsoring of the awards for Cults Academy's Young Musician of the Year competition and much, much more both here and abroad.

If any of this sounds of interest we are always ready to welcome new members. If there is anyone out there, who would like to find out more or come along to one of our meetings, please contact our secretary Quentin Tweedie on 01224 868218 and have a look at our website on [www.aberdeendeesiderotary.org](http://www.aberdeendeesiderotary.org)

Mary Lennox  
President 2011 - 2012

## Camphill Wellbeing Clinic

An *integrated* medical practice with a holistic approach to healing



Conventional medicine and primary healthcare are complimented by **Anthroposophic healthcare**



Anthroposophic healthcare uses natural and **homeopathic** medicine artistic therapies counselling and massage integrated with conventional medicine



[www.camphillmedical.org.uk](http://www.camphillmedical.org.uk)

CWC, Bielside, Aberdeen. AB15 9EP  
Tel: 01224 868935/869833

Camphill Wellbeing Clinic, incorporating the Camphill Medical Practice Ltd., a Scottish charity (SCO16291)



## Bon Accord Leasing

### LANDLORDS!

Are you looking for leasing specialists to manage your property or portfolio of properties? Leasing property can be a worrying experience. Let us take away the pain of leasing by matching the right tenants to your property – it's what we do!

We operate a **NO LET NO FEE** policy

Drop in or call us, we'll be happy to help:  
Bon Accord Leasing, 11 The Courtyard  
Cults, Aberdeen, AB15 9SD

**T: 01224 739771**

**E: [office@bonaccordleasing.co.uk](mailto:office@bonaccordleasing.co.uk)**

**[www.bonaccordleasing.co.uk](http://www.bonaccordleasing.co.uk)**

# Cults Playgroup

Cults Playgroup had another busy term in the lead up to Christmas. The children have been settling into their new location in the Upper Hall behind Cults Church on Quarry Road and getting to know our newly appointed Playgroup Manager Jenny Willox. Jenny is a qualified Primary School teacher, who has worked in early years and pre-school training and assessment, so will be able to assist us in raising the standards of our childcare provision and development of "Curriculum for Excellence".

As part of playgroups' continuing support for different charities we recently had our annual external fundraiser. It was decided that we would support Scottish Cot Death Trust. The children, staff and parents took part in a welly walk at the end of October which was great fun for all and raised a total of £115.

The week before the holidays the children visited the Christmas Tree Festival at Cults Parish Church. They marvelled at all the different trees on display with regards to sizes, colours and themes. Half an hour was well spent in the tranquil sanctuary reflecting on the thought and hard work that had gone into creating the trees. We are looking forward to next year's festival.

From the start of the new term with the outdoor area beginning to take shape, the children will be involved with planning activities that will be connected with the outdoors, so we are looking forward to all the ideas that they come up with!

If you would like to support a local charity please support us as Cults Playgroup is a registered Charity SC001160. It is easy to donate as we now have in place a text donation service, simply text CPLA11£1 to 70070 if you wish to donate a £1 or CPLA11£10 to 70070 if you wish to donate £10. Many thanks for your support.

Our main fundraiser of the year is fast approaching. Our Burns Supper is being held at the Cults Hotel on 28th of January 2012. This will be in aid of raising funds for our new shed, fence and further development of garden area. We would like to take this opportunity to thank everyone involved and for any donations made to our raffle.

If you have missed our Open Week, don't worry, as we welcome visitors at any time. Please call Jenny on 07842 470828 to arrange a date for your visit. The sessions run Monday – Friday from 9.15 to 11.45 for children aged 2½ to 5 funded spaces available. Jenny will also be organising a 2's Group in the Church hall for children aged 1½ to 2½ on a Monday from 9.30 – 11.30.

To find out more please contact us on Tel: 07842 470828 or email [cultsplaygroup@gmail.com](mailto:cultsplaygroup@gmail.com)

## NEWTON DEE CAFE

Welcome to our cafe serving teas, coffees, cold drinks with homemade scones, cakes and biscuits

### LUNCHES GIFT SHOP

A lovely selection of gifts to suit every occasion  
Handmade cards also available

#### OPENING TIMES

Tuesday - Friday 10am - 4.45pm

Saturday 10.30am - 4.45pm

Sunday and Monday CLOSED

For more information telephone : 868262

## Cults Library & Learning Centre

**Tel : 868346**

**Email : [cultslibrary@aberdeencity.gov.uk](mailto:cultslibrary@aberdeencity.gov.uk)**

**A Happy New year to all**

**Have you visited your local Library yet or gone online and checked out our website?**

**You can use our computers for free**

**Some Libraries also have Wi-Fi connectivity**

**Did you get an E-Reader for Christmas?**

**In the near future, our Digital Library will be available**

**This will allow users to borrow e-books and Audio books directly from the website**

**Check the website and our Facebook profile or give us a call**

**We have our monthly Bookbug Sessions on a Tuesday morning when we sing songs and nursery rhymes**

**For info on any of the above, visit [www.aberdeencity.gov.uk/libraries](http://www.aberdeencity.gov.uk/libraries)**



Established 1971

**For Children 1½ - 5 yrs**

**Playgroup: Mon to Fri 9.15 - 11.45**

**Lunch Club: Tues 11.45 - 1.00**

Out to LUNCH!

**Two's Group: Mon 9.30 - 11.30**



Friendly, qualified playgroup team.

Secure outdoor play area.

Funded and non-funded places available.

Flexible number of sessions accommodated.

For more information or to arrange a visit contact Jenny on **07842 470828**

or

email [cultsplaygroup@gmail.com](mailto:cultsplaygroup@gmail.com)

Member of the Scottish Pre-School Play Association  
In Partnership with Aberdeen City Council



# ASPECT

Building Design

- ▶ Alterations & Extensions
- ▶ Architectural Services
- ▶ Planning Approval
- ▶ Building Warrant
- ▶ Project Management
- ▶ Free Initial Consultation

ASPECT Chartered Surveyors  
The Old School  
GARLOGIE  
Westhill  
Aberdeenshire  
AB32 6RX

**Graeme Thom**

*DipBS MRICS*

m :: 07971 194 770

graeme@ASPECT-bs.com

www.ASPECT-bs.com

t :: 01224 746 855

## THE BARBER'S POLE

# OPEN 7 DAYS

No appointments necessary

### Opening Hours

Mon Tues Wed Fri **08.30 ~ 18.00**

Thursday **08.30 ~ 19.00**

Saturday **08.00 ~ 17.30**

Sunday **10.00 ~ 16.00**

### Late Opening

Bridge of Don

Monday ~ Friday

**till 7pm**



www.thebarberspole.co.uk



## Cults Otters Amateur Swimming Club

# Learn to Swim Classes

For beginners and improvers  
For children aged 4 and above

### Cults Pool:

Monday 4 - 6 pm

Wednesday 6.30 - 7.30 pm

Friday 4 - 5 pm

Saturday 12 - 4 pm

Sunday 12 - 4pm

### Camphill Pool:

Saturday 9 - 11 am

Sunday 9 am - 1 pm

Aqua 1 - 3 and Development 1 & 2 Classes  
Places also available for competitive swimmers  
Visit our website for further information

For more details, please contact

Jo Gibson on 01224 868 124

LTS@cultsofters.org.uk

www.cultsofters.org.uk



SCOTTISH swimming  
everyone can swim!



Commercial, Contract, Domestic  
One off Tidy-ups and Regular Visits  
All Year Round Maintenance  
NPTC Certified, Free Written Quotes

### Tree Services

- Pollarding
- Felling
- Precision dismantling
- Leylandii reduced, cut, removed
- Hedge cutting
- All foliage removed

**NPTC qualified**  
**Fully Insured**

### Grounds Maintenance

- Hedge cutting
- Grass cutting
- Strimming
- Pruning
- Weeding
- Planting
- Tidy-ups
- Leaf Clearing

Free written itemised quotes  
Free, friendly on-site advice  
All work guaranteed and carried out by trained staff

Call Tim James on

01330 860986 | 07767 651285



# Red squirrels in Deeside need your help!

Householders and landowners along the north Deeside corridor out of Aberdeen are urged to lend a hand in continued efforts to successfully boost red squirrel numbers across the area – by opening their gardens and borrowing a squirrel trap!

It seems like an odd thing to do to help red squirrels, but the traps are intended to be used in areas where grey squirrels, the main threat to the reds, are still thriving and at risk of encroaching further in to red territory.

The red squirrel is native to Britain and was once widespread, but has declined markedly in recent years. Scotland now holds 75% of the UK's red squirrel population. Their decline is mostly due to the spread of the grey squirrel, which was only introduced into the UK in the 19<sup>th</sup> century.

Grey squirrels arrived in Aberdeen City in the 1970s and due to the continuous, high quality habitat that can be found along the Don and Dee corridors, soon spread out as far as Banchory and Inverurie. As the greys have advanced, red squirrel numbers have decreased, becoming completely absent in some areas.

These expanding grey squirrel populations are the main threat to the red squirrel's existence across Grampian and the Scottish Highlands. Unless action is taken to halt the expansion, the outlook for red squirrels is bleak.

The call for help comes from the people behind the Saving Scotland's Red Squirrels (SSRS) project. Led by the Scottish Wildlife Trust in partnership with Scottish Natural Heritage, Scottish Land and Estates and Forestry Commission Scotland, the three-year old project has successfully focused its red squirrel conservation efforts along Deeside.

The SSRS North East Project Officer, Annabel Harrison, said, "Recent volunteer-led surveys suggest that the red squirrel conservation work we've been involved with so far is reducing grey squirrel numbers and improving conditions for red squirrels to thrive. For example, woodland surrounding Banchory, which formerly had an abundance of grey squirrels, now appears to have none and we are receiving more and more red squirrel sightings here. We would like to continue this success further down the Dee towards Aberdeen."

Annabel reports, "We're already receiving more and more sightings of red squirrels in Peterculter, Milltimber and as far East as Garthdee, and would like to create the same 'red-friendly' conditions across Cults, Bielside and Milltimber. But to achieve this, we need access to even more private gardens along Deeside that contain prime grey squirrel habitat."

SSRS provides information and advice to land owners about how to manage woodlands to benefit red squirrels and works to raise public awareness of the red squirrels' plight by engaging individuals and communities in red squirrel conservation. A crucial part of the work involves preventing further grey squirrel range expansion.

Until non-lethal methods of grey squirrel control are available, the only way to prevent grey squirrels from dispersing further



into Aberdeenshire is by careful cage-trapping followed by humane dispatch. Across Grampian, co-ordinated grey squirrel control carried out by trained Grey Squirrel Control Officers, is targeted at the most prolific grey squirrel populations which drive the grey's range expansion.

A major factor in the success of this approach is the participation of landowners and householders in the SSRS trap loan scheme.

The SSRS Project Manager, Mel Tonkin, added, "We are able to loan traps and provide a dispatch service, carried out by our trained Grey Squirrel Control Officers, free of charge. This scheme fulfils a vital element to the national red squirrel protection strategy and if anyone would like to help, either by allowing us access to their grounds, borrowing a trap or even reporting red or grey squirrel sightings in the area, they can visit our website ([www.swt.org.uk/wildlife/squirrelsightings](http://www.swt.org.uk/wildlife/squirrelsightings)) and find out how to get involved."

If you would like any more information, please contact the SSRS North East Project Officer, Annabel Harrison, on 01224 266526 or at [redsquirrelgrampian@swt.org.uk](mailto:redsquirrelgrampian@swt.org.uk).

Photo courtesy of Tony Jenkinson



Something for everyone  
at your local  
community church!

[www.dcfchurch.org](http://www.dcfchurch.org)  
Binghill Drive, Milltimber, AB13 0JE  
Church Office: 01224 733979

**WORSHIP SERVICES**

**9:30am & 11:30am Family Service**  
with crèche, Junior Church, S1-2 Bible Class  
and Celebration Group (11:30 Service only)  
**6:00pm Evening Service**  
with Communion 2<sup>nd</sup> & 4<sup>th</sup> Sunday monthly  
and Mission Service 1st Sunday monthly

Join us for our Easter Services  
Good Friday, 6<sup>th</sup> April  
Evening Communion, 7pm

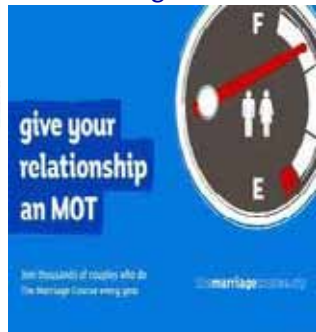
Easter Sunday, 8<sup>th</sup> April  
Family Service, 9:30 & 11:30am  
Easter Praise Evening, 6pm



Robert Hamilton, our Care Pastor, is happy to meet for a chat, perhaps to be a listening ear, offer help, share a pastoral prayer, or just get a chance to meet and say 'hello'. 07595072090 / 733979 (church)

**community one**

You're most welcome to join us for  
**COMMUNITY NIGHT**  
starting 17<sup>th</sup> Jan 2012 - Tuesday evenings, 7:30pm.  
We start with a meal. 3 courses on offer this time.



Positive Parenting Course  
"Time Out for Teens!"

Wednesday night  
@ Deeside Christian Fellowship

BIBLE STORIES PRIZES  
GAMES SONGS QUIZES

PI - 3  
6:30 - 7:30 in Cafe 1

EXPLORERS

PI - 7  
7:30 - 8:30  
in Main Hall

CHALLENGERS

**55+**

You will be made welcome at our over 50s social group – events, outings, Coffee Mornings and more! We meet in the Church, second Monday of the month. Come join us for a visit.



Getting married?  
We offer a  
**Marriage Preparation Course.**

Please phone the church office on 733979 if you would like to find out more.



**THE ARK**

**PARENTS, BABIES & TODDLERS**  
We would love to have you join us with your little ones Tues mornings, 9:45-11:30am. Phone Morven on 744829 or please just come along.

**café one**  
milltimber's meeting place

We look forward to welcoming you on Thursday mornings  
**9:15am-12pm**  
Coffee/Tea & Tray-bake (donation £2)

**#event**

1<sup>st</sup> Friday of the month, 7:30-9:30pm, at Hillview Community Church, Cults. For S1-S4 youth in Milltimber, Cults, Bieldside area.

[www.facebook.com/MBC.event](http://www.facebook.com/MBC.event)



**MISSIONARY CRAFT WORKSHOP**



We meet in Café One every 2<sup>nd</sup> & 4<sup>th</sup> Wednesday monthly, 10am-12pm to make useful gifts to send to children and missionaries working abroad. We would be pleased to have you join us.

## Easy maintenance raised beds



Give your garden the best start this spring.  
Let Anson Mackay create low maintenance raised beds for your outdoor space

**Anson Mackay**

Garden Design & Construction

Visit us on facebook  
follow us on twitter @anson\_mackay  
www.ansonmackay.co.uk

Decks | Patios | Walling | Fences & Gates

**01224 790021**

## News from the Milltimber Community Association

It seems a long time ago now, last November, when we held a Murder Mystery Evening "To Mock a Killing Bird". Milltimber hall was transported back in time to the 1920s and a stormy night when the vicar died. Who killed him? Well that was what we had to find out. The actors of Blitz Entertainment gamely played their parts with shocked faces as we tried to find out their secrets. Was x secretly having an affair with y, could z be their illegitimate child and who had the motive and the means? Each team submitted their answers to 'who, why and how' and the lead actor made us laugh by tearing them all apart before revealing the truth. If you've never been to one of these evenings before, they are huge fun and well worth looking out for.

Last year we also introduced membership procedures to the MCA. Membership is free and open to everyone who lives in and around Milltimber. Although you do not need to become a member to use the hall, we very much hope that you will. The hall is completely run by volunteers with no staff. By joining you not only show your support but you strengthen our voice. For example, we are working with the MBC community council to suggest community facilities that should be provided if the Cala homes development goes ahead in Milltimber. The more members we have, the greater force our requests will carry.

If you would like to join the MCA please call Sue Smedley on 732172. We would also be keen to hear from you if you have ideas for future events you would like us to hold or if you are interested in helping the committee in any way.

# ANDY LOVELL DÉCOR LTD



City & Guilds  
Advanced Crafts

PAINTER & DECORATOR

**Services tailored to suit your home**

Mobile 07939 150 858

**For a free consultation call  
Milltimber - 732 070**

## Piano Tuition

Flexible times – daytime and evening  
Exams, music theory and just playing for  
pleasure

All ages and levels welcome

Please contact Becky on Mob: 07907 129851

Home: 01224 863087

Email: rebeccratsides@yahoo.co.uk

## Paul Bryson

Tel: 01224 741388

- Plasma & LCD TV Installations
- Aerial & Satellite Installation
- Digital and Analog Systems
- Multipoint Distribution Systems
- Home Cinema & Surround Sound Installation
- Integrated Sound System Installations
- Additional Phone Points
- All Cables Hidden

For free home survey and no obligation quote

For your convenience work undertaken 7 days per week

Email: bryson.paul@yahoo.co.uk

Mobile: 07943 179212

## LINDA'S HAIR STUDIO ...

simply the best!

- trained in London by Vidal Sassoon and Toni & Guy
- professional modern salon in my Milltimber home

### Special Offers

HIGHLIGHTS: 1-3 colours - £60-£70 inc. cut & blow dry

TINT ROOTS - £50 inc. cut & blow dry

SENIOR CITIZENS - cut & blow dry - £27

Home visits by appointment

Kids and Dads welcome !

Tel : 01224-733250 or Mob : 07947 437 536

9 Braehead Terrace, Milltimber AB13 OEB



**The barcode key system: another great trustworthy service from Aberdeen Property Leasing.**

Lease your property with confidence.  
To find out more phone us on  
**(01224) 635355**



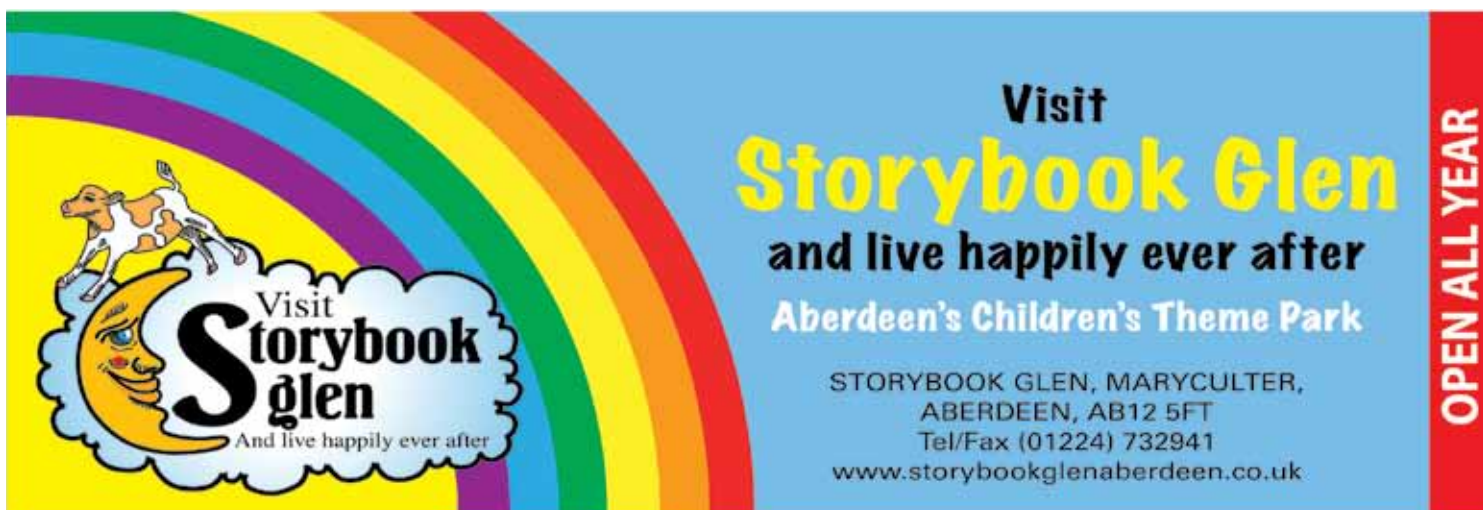
**ABERDEEN  
PROPERTY  
LEASING**

138/140 Rosemount Place, Aberdeen AB25 2YU



**www.primelet.com**

**Dedicated to Leasing**



Visit  
**Storybook Glen**  
and live happily ever after  
Aberdeen's Children's Theme Park

STORYBOOK GLEN, MARYCULTER,  
ABERDEEN, AB12 5FT  
Tel/Fax (01224) 732941  
www.storybookglenaberdeen.co.uk

**OPEN ALL YEAR**

# dentalinspirations

is delighted to announce the opening of their new dental practice in Cults on Tuesday 3rd May. Chris Pumford BDS a long standing partner of Queens Road Dental Practice and his team have moved. Dr Pumford and his team are dedicated to providing the highest quality dentistry in a caring, relaxed and professional environment. The practice ethos is all about preventative dentistry, listening to our patients needs and helping them achieve their ultimate desire.

A beautiful smile creates confidence and gives us a sense of wellbeing and improves our general health. We work in partnership with our patients to inspire them to achieve their aspirations. State of the art techniques are used from white fillings, crowns, bridges, veneers, tooth whitening, invisible braces and dental implants.

## A Range of Dental Inspirations Plans for every member of the family



395 North Deeside Road, Cults,  
Aberdeen AB15 9SX  
Tel : 01224 860220  
Fax: 01224 860229  
Email: info@dentalinspirations.co.uk  
[www.dentalinspirations.co.uk](http://www.dentalinspirations.co.uk)



## From 0 to 5 – making learning come alive!



Just two minutes down the road from Milltimber lies Maryculter Community Hall where, on weekdays, you will find young children being very busy having fun – investigating squidgy paint, chasing bubbles, making their own lunch and getting outside in the fresh air!

The South Deeside Under Fives is a community-led charity that provides childcare for children from birth to five years. Meeting at Maryculter Community Hall (next to the Old Mill Inn on the South Deeside Road), it runs three programmes during school terms - a Babies and Toddlers group, sessions for two year olds and lunchtime activity classes for three to five year olds.

### Baby & Toddler Group – Mondays 9.30am to 11.30am

For children from birth to four. Adults relax over a coffee whilst children make their first friends. Playleaders are there for a chat and to ensure children are happy playing.

### Twos Group - Wednesdays, Thursdays and Fridays 9.30am to 11.30am

For children aged two until they go to nursery. Tots are left in the capable hands of experienced playleaders who support them in learning through play in a small, friendly group. Activities include crafts, stories, bugs and bubbles in the garden and walks around the local countryside.

### Rising Fives Group - Tuesday lunchtimes, 12 noon to 2pm

For ante-pre and pre-school children. A gentle introduction to spending more time away from their adults prior to school. Activities include cooking, painting or sports – lunch is provided!

The South Deeside Under Fives is a great way for your children to meet some of their first friends and for you to get to know other local families. Give us a call or drop by for a look around! More information at M: 07966163953 or W: [www.south-deeside-under-fives.co.uk](http://www.south-deeside-under-fives.co.uk).

Mandy Tulloch, Treasurer, South Deeside Under Fives



## Cults Otters Amateur Swimming Club

# “Swim Fit”

Fun activities for general fitness & to develop swimming skills for children aged 8 -14

Saturdays and Sundays  
from 3.15 pm - 4 pm  
During school term-time  
only at Cults Academy Pool

- Life saving skills
- Fun and games to build up fitness (not lots of lengths!)
- Learn to dive

Need to have completed minimum of Aqua 3 and be able to swim 50m front crawl and 50m breaststroke

For more details, please contact:

Sonia Richardson on 01224 316 854  
[LTS@cultsotters.org.uk](mailto:LTS@cultsotters.org.uk)

[www.cultsotters.org.uk](http://www.cultsotters.org.uk)



## Fun and friendly childcare for children from birth to five years

### Maryculter Community Hall

(next to the Old Mill Inn), South Deeside Road

### Baby & Toddler Group Mondays: 9.30am -11.30am

### Twos Group Wednesdays, Thursdays & Fridays: 9.30am-11.30am

### Rising Fives Tuesday lunchtimes: Noon - 2pm

M: 07966 163953

E: [info@south-deeside-under-fives.co.uk](mailto:info@south-deeside-under-fives.co.uk)

W: [www.south-deeside-under-fives.co.uk](http://www.south-deeside-under-fives.co.uk)



Affordable IT Solutions for home and businesses

QUALITY SERVICES | LOW COST PRICES  
FAST REPAIRS | FREE QUOTES



- Laptop & PC Troubleshooting
- Software Installation & Troubleshooting
- Virus/Spyware removal
- Password Recovery
- PC / Laptop Health check
- Data recovery
- PC / Laptop repairs & part upgrades
- Printer Installation & Repair
- Broadband Installation & Troubleshooting
- Onsite Visits



If your PC or Laptop is running slow  
try our computer service for

**01224 433490**



info@solvtek.co.uk | www.solvtek.co.uk



Massage can help...

- Relieve Stress & Anxiety
- Sports Injuries
- Sciatica
- Back Pain
- Adhesions & Scar Tissue
- Arthritis
- Headaches & Migraines
- Sleeping Problems
- Low Energy
- Improve Blood Circulation
- Relaxation
- Lower Blood Pressure & many more...

Day & Evening Appointments Available

**Call 07818093973**

**Jules Hunter DSM DOSM DIHM SMT O**  
**Massage Therapist**

**Kingswells, Aberdeen**

Help yourself or help others, Gift Vouchers Available

## GRAMPIAN DECORATIVE AND FINE ARTS SOCIETY

**AN INVITATION** The first half of our exciting season of lectures has been very successful but there is still plenty of time to enjoy the remaining part of the programme. Please join us for one of our monthly meetings and if you enjoy it, we would be delighted to welcome you as a member. We have an exciting and varied programme of lectures, study days, visits to art galleries and museums, plus visits to gardens and private houses often not open to members of the public. By joining us you will be sharing with others who enjoy the decorative and fine arts and who wish to learn more about them. No previous knowledge is needed – only enthusiasm! The current programme is detailed below. Do come along – you'll be made most welcome. Visitors are invited to make a donation of £5.00

- 9 February Discoveries of Scotland: Painters and Other Visitors 1700 – 1900
- 9 March The End of a Tradition: The Art of Auguste Rodin (1840 – 1917)
- 13 April Laos: Historic Buddhist Temples to Modern Silk Weaving
- 11 May "Pilgrims of Babylon". The Artists of Montmartre
- 8 June Transports of Delight: The Art of the Travel Poster of the 1930's

The venue is Robert Gordon's University, The Faculty of Health & Social Care, Scott Cassie Circle, Inchgarth Road. Please join us for a glass of wine or soft drink at 7.00 prior to the lecture which starts at 7.30. For more information please ring Alison on 01224 869639 or Thyra on 01224 481278



# JUST GEMS

Diamonds & coloured gemstones in fine jewellery



**Just Gems**

**322a North Deeside Road,  
Cults, Aberdeen, AB15 9SE**

**Tel: 01224 543717**

Find us next to the Cults Hotel



[www.just-gems.co.uk](http://www.just-gems.co.uk)

# Reiki Therapy

**Reiki (pronounced Ray – Key)** is a Japanese word meaning Universal Life Energy. It is an ancient method of healing, originally developed in Japan during the 20th century by the Buddhist, Dr Mikao Usui.

Reiki is a gentle, non-Invasive treatment working with the energy that exists around each of us helping the bodies natural ability to heal itself. This healing energy is channelled through the practitioners hands and into the client where it is used on whichever level is most appropriate for that person at that time.

Reiki is effective on all levels Physical, Mental, Emotional and Spiritual. It can help bring a deep relaxation, a sense of nurturing and peace, soothing emotions and reducing negative feelings, anxiety and stress. It helps heal many physical conditions and releases toxins held within the body. This healing energy goes right to the source of the bodies imbalance and not just to the manifesting symptoms.

Reiki is a completely safe, natural and holistic way of treating mind and body dis-ease.

A Reiki treatment usually lasts 1 hour per session. The recipient is normally lying down but can be treated sitting and remains fully clothed throughout the session.

How does it feel? Everyone experiences Reiki energy differently. Some feel a slight tingling, see colours or sensations of warmth. Others just a deep relaxation, feeling of well being and tranquillity. Others feel rejuvenated and energised. Some even fall into a deep and refreshing sleep.

**Receive Reiki healing and help yourself or help others, Gift vouchers available on request.  
Treating Body, Mind and Soul  
Day & Evening Appointments available  
Call 07818093973  
Jules Hunter DSM DOSM DIH SMT0  
Kingswells**

Cults Academy PTA

## Ceilidh

Friday, 2<sup>nd</sup> March 2012  
7:30pm to midnight  
Ardoe House Hotel

with  
**Clachan Yell**

Tickets £15.00 includes stovies supper  
Phone Cults Academy School Office on 01224 868801

*Raffle to be held with fantastic prizes!*



**fourmile**  
HOUSE KINGSWELLS

Old Skene Road  
Kingswells, Aberdeen  
AB15 8QA

- Restaurant
- Conference Room
- The Fourth Room

try our  
*"Little Lunch"* menu...  
lunch for less Monday to Saturday

☎ 01224 740 318  
[www.fourmile.co.uk](http://www.fourmile.co.uk)

*Both family owned and run - for the personal touch  
Hope to see you soon!*

# PHOTOStoDVD

Convert your Photographs  
Slides, VHS Videos or  
Camcorder Tapes to DVD

[www.PHOTOStoDVD.org.uk](http://www.PHOTOStoDVD.org.uk)  
[info@PHOTOStoDVD.org.uk](mailto:info@PHOTOStoDVD.org.uk)  
Tel. 01569 750697



**ferryhill**  
HOUSE HOTEL

169 Bon-Accord Street  
Aberdeen  
AB11 6UA

- Restaurant
- Malt Room Lounge
- Outdoor Area

☎ 01224 590 867  
[www.ferryhillhousehotel.co.uk](http://www.ferryhillhousehotel.co.uk)

# Pet Resort ABERDEEN

★★★★★



*Wish you were here!*

## Care of Your Cat

Treat your cat to five star accommodation and first class treatment in our luxury boarding facility which is set on a hillside with acres of beautiful countryside and picturesque surroundings offering your cat a peaceful and tranquil stay.

## Small Animal Boarding

We can also board your small animals. Our experienced and caring staff are knowledgeable about birds, reptiles and amphibians, rabbits and other small, furry animals.



## SPA Treatments

- ♥ Nail clipping
- ♥ De-matting
- ♥ Grooming
- ♥ Trimming
- ♥ Bathing
- ♥ One-on one playtime

Tillyoch, Culter House Road,  
Milltimber, Aberdeen, AB14 0NS

Tel: 01224 733885

e mail: [reception@aberdeenpetresort.co.uk](mailto:reception@aberdeenpetresort.co.uk)

[www.aberdeenpetresort.co.uk](http://www.aberdeenpetresort.co.uk)



PET CARE - WITH A HEART OF GOLD!

## QUALIFIED CHIROPODIST/PODIATRIST

\*\*\*\*\*

*Yvonne M. Thomson*  
MSSCh. MBChA.  
H.P.C. Registered

\*\*\*\*\*

Home Visiting Practice  
Est 1998

New Patients Welcome

Tel : 01224 - 869509

MEMBER OF THE BRITISH CHIROPODY AND PODIATRY ASSOCIATION

## ABERDEEN AESTHETICS

By Vicsan

Treating Facial Lines and Wrinkles

Facial Rejuvenation

Restylane

Treatment for Underarm Sweating

Skin Care

Derma roller

For a consultation with fully qualified  
Medical Practitioners please contact :

**Orkid**

85 North Deeside Road

Bieldside

Tel : 864444

[www.vicsan-aberdeen.co.uk](http://www.vicsan-aberdeen.co.uk)

**TUESDAYS**  
10:45am  
Culter Sports Centre\*  
with crèche  
&  
7:00pm  
Cults Academy Dance Studio  
£4 Per Session

**THURSDAYS**  
6:15pm  
Ardoe House Hotel  
Non-members welcome  
£5 Per Session

Come and join  
the party!



**Veronica Scott**  
Zumba Instructor  
Mobile 07917 104113  
[veroni75@hotmail.com](mailto:veroni75@hotmail.com)

LATIN-INSPIRED  
DANCE FITNESS  
CLASS VERY  
DYNAMIC





**Holiday villa to rent in Florida.  
Rates from £75 to £95 per night.**



Only 15 minutes from all Disney parks.

Comfortable, private villa with five bedrooms and three bathrooms.



West facing pool to enjoy the Florida sunshine.

On Highlands Reserve Community with its own golf course, tennis courts and swimming pool.



Games room with pool table and table football.

Free wi-fi. Cable tv in most rooms.

Fully equipped kitchen and laundry.

Local contact as owner lives in Cults.

For more information, visit [www.akmfloridavilla.co.uk](http://www.akmfloridavilla.co.uk)  
For prices and availability, contact Andrew Melvin on 07834604312 or email [info@akmfloridavilla.co.uk](mailto:info@akmfloridavilla.co.uk)

## WE ARE NOW TAKING APPLICATIONS FOR ENTRY IN AUGUST 2012



### Nursery and Junior Department

Applications are welcome for entry to our Daffodil Nursery (boys and girls from age 3) and Primary 1. Entry examinations for girls wishing to enter Primary 6 and 7 will take place on Saturday 21 January 2012.

### Senior Department

Entry examinations for girls wishing to join 1 Senior will take place on Thursday 19 January 2012. A few places may be available in other senior year groups. Entry is by assessment.

**Please contact the Admissions Officer on 01224 595188 for details.**

Bursaries are available for selected year groups (including P6, P7, S1, S5 and S6).

Transport is available from Banchory, Ellon and Inverurie.

[www.st-margaret.aberdeen.sch.uk](http://www.st-margaret.aberdeen.sch.uk)



St Margaret's School for Girls, 17 Albyn Place, Aberdeen, AB10 1RU  
Registered charity with OSCR (Reg. no. SC 016285)



## The Lairhillock Inn and Crynoch Restaurant

*Where Quality is Everything.*

*A warm welcome awaits you in our family run lounge conservatory and Crynoch Restaurant.*

*Open Fires, real ales and freshly prepared food sourced locally (where possible).*

*For that special occasion we can cater for weddings and private functions up to 60 people.*

For more information on our facilities please do not hesitate to contact us.

Telephone 01569 730001  
E. Mail [info@lairhillock.co.uk](mailto:info@lairhillock.co.uk)  
[www.lairhillock.co.uk](http://www.lairhillock.co.uk)



Margaret Waite  
Tel no: 07764 168 873  
[margaret@mwaitemortgages.com](mailto:margaret@mwaitemortgages.com)



June Hodge  
Tel no 07715 454 165  
[junehodge@btinternet.com](mailto:junehodge@btinternet.com)

## INDEPENDENT MORTGAGE ADVICE

**Moving Home  
First Time Buyer  
Remortgage  
Buy to let Mortgage**

With a combined career of over 30 years in Financial Services we have a wealth of experience in advising and meeting the needs of our clients

We can source a mortgage for you from the Whole of the Market together with exclusive deals offered to brokers like ourselves through our association with Legal & General Mortgage Club. We will recommend the most suitable mortgage once we have assessed your needs and affordability, it will be the one that best fits your individual circumstances. We can also advise on and arrange protection for your mortgage. For insurance business we arrange policies exclusively from Legal & General.

Our main aim is to provide a flexible and personal service with evening and weekend appointments if required.

**Your home may be repossessed if you do not keep up the repayments on your mortgage**  
We usually charge £250 for arranging a mortgage, the actual amount payable will depend upon your circumstances.  
Please call or email to arrange a mutually convenient time to meet.

H0123702



# KELLY OF CULTS

In 1902, Benjamin Kelly founded his family bakery business on the principles of Quality, Value & Service.  
At Kelly of Cults, some things never change.

Visit our Costcutter supermarket in Cults for all your daily grocery shopping needs:

- \* Groceries
- \* Fresh Bakery
- \* Wines & Spirits
- \* Fresh Fruit & Veg.
- \* Frozen Foods
- \* Fresh Fish
- \* National Lottery
- \* PayPoint
- \* Daily Newspapers
- \* Home Deliveries

Tel : 0845 456 1902 Fax: 01224 869864  
345 North Deeside Road, Cults, Aberdeen, AB15 9SX



# Aberdeen Waldorf School

Teaching through head, heart and hands



Mainstream Steiner-Waldorf Education for the Early Years

### Parent and Toddler Group

Tuesday & Wednesday 9.45am - 11.45am

### Kindergarten for 3 - 6 year-olds

Monday to Friday 8.30am - 12.30pm

Aberdeen Waldorf School

Craigton Road, Cults

Aberdeen, AB15 9QD

Tel: 01224 868366

[www.aberdeenwaldorf.co.uk](http://www.aberdeenwaldorf.co.uk)

Registered Scottish Charity No. SC012895



# PETALS OF PETERCULTER

Flowers for all occasions

- Gift Bouquets
- Weddings & Celebrations
- Corporate Contracts
- Reception Vases
- Openings & Events
- Funerals
- Deliveries

299 North Deeside Road,  
Peterculter, AB14 0UL

Tel. & Fax: 01224 733222

Part of the Kelly of Cults Limited family



# MD

## GARDEN SERVICES

Garden Design

Treated Wood Fencing

Grass Cutting Border Edging

Shrub Pruning / Trimming

Hedge Cutting

Tree Work

Turfing

Landscaping

Planting

Bark / Chips Laid / Supplied

Garden Clearance / Tidy Ups.

Liability Insured  
Competitive Rates  
Reliable  
& Friendly  
Free Estimates  
Private &  
Commercial

Mike Duffus  
Tel: 01224 732872  
Mobile: 07742 761 763

E-mail: [mdgardenserv@btinternet.com](mailto:mdgardenserv@btinternet.com)

# Culter Youth Football Club News

CYFC was established in 1983 and presently has 18 teams and over 300 players in age groups from 5 to 19 years old.

## Culter 2002 United

Another great season this year for Culter 2002 United both on and off the park, ending with 5 wins out of 5, including 3 by a single goal against excellent opposition teams of Dyce, WestDyke and Cove. More importantly, the players are all showing continued improvement in only their second season in the A/B league.

The team is very much a 'community team' with 8 of the 10 players also playing in the same Cults Primary School P5 team, assisted by 2 players from Kincorth and Mile End. Coaches David Strang and Mark McEwan also upped their game by completing SFA coaching badges at level 2 and 3 respectively.

Fundraising also went well this year with a Disco night in Cults hotel raising £1500 to support the team. New strips, sponsored by Robin Porter of Westerton, mean the players are looking good on field. The next fundraiser will be a Karaoke held jointly with Culter U13-s (coached by Mark Greig, Davis Larssen and Graeme Martin) on the 17 March, again at the Cults Hotel. Tickets from event organiser Kim Larssen - Kimbo-7326@hotmail.com. Kim will also happily accept raffle or auction prizes !

## Culter Boys Deeside U13'S

The boys have been entered into the Blackpool Cup in April 2012 which will involve a fund raising campaign over the next few months. Fund raising events include a Horse Race Night (3rd Feb 2012) at the Ashvale, bag packing and various other fund raising activities.

Following the successful trip by the Culter U15's United in the Hanze Trophy in Holland this year, our long term plan is for the team to enter a similar competition in Holland in 2013 so the fund raising activities will continue.

If anyone would like to help support the fund raising activities or wishes to donate towards the trip then please contact either Paul Stein on 07714 292311 or David Galashan on 07831 572852.

**Most Culter teams are looking to strengthen their squads so if anyone is interested in joining us they should contact Club Secretary Phil Bellis in the first instance (07714 159419 or phil.bellis@virgin.net).**

Also see Club website at: [www.culteryouthfc.co.uk](http://www.culteryouthfc.co.uk)



## New ZUMBA class

starting January at  
Woodbank

(in Sports Centre, North Deeside Road, Pitfodels, AB15 9PN-entrance opposite Pitfodels Station Road).

**Tuesdays 9:30-10:15.**

For more information contact Carina on 07760-337523!

Free parking facilities.

*Pilates Aberdeen*  
**SOLVEIG DAHLE SMITH**  
Cert. Pilates. Inst. MAPPI  
Experienced physiotherapist

**PILATES CLASSES**  
PETERCULTER SPORTS CENTRE

Mon & Tuesday afternoons  
Tues & Thursday evenings  
CAMP HILL SCHOOL MURTLE

Wednesday evenings  
CULTS CHURCH  
Friday mornings

Contact details  
solveig@pilatesaberdeen.com  
www.pilatesaberdeen.com  
01224 861421

PLUMP OUT AND SOFTEN DEEP LINES AND WRINKLES. CACI ULTIMATE PROVIDES A NEEDLE FREE ALTERNATIVE TO COLLAGEN INJECTIONS AND OTHER DERMAL FILLERS.

FANTASTIC RESULTS WITH THIS NON-SURGICAL TREATMENT. PRICES START FROM AS LITTLE AS £40.

AS THE NAME SUGGESTS THE CACI ULTIMATE REALLY IS THE ULTIMATE AESTHETIC TREATMENT SYSTEM.

 CACI

 ULTIMATE

AS SEEN ON CHANNEL 4'S 10 YEARS YOUNGER

AVAILABLE AT:

KIPPIE LODGE SPORTS & COUNTRY CLUB  
NORTH DEESIDE ROAD, MILLTIMBER,  
ABERDEEN. AB13 0AB  
BEAUTY DIRECT LINE: (01224) 739905  
WWW.KIPPIELODGE.CO.UK





# THE ARK

We'd love you to join us at the mums and babies/toddlers group on a Tuesday at 9.45 to 11.30 during term time in the main hall of Deeside Christian Fellowship Church, Milltimber. We play with great toys, have a snack and sing some songs (and the mums have a coffee too!).

For more information call : Morven on 01224 744829

## the Oven Valet Oven Cleaners

Doing the jobs you hate!  
Bringing the sparkle back to your oven using non toxic, non caustic products in your home.



01330 823079 07920 483 233

[www.theovenvalet.com](http://www.theovenvalet.com)

[info@theovenvalet.com](mailto:info@theovenvalet.com)



## Dog Walking and Pet Sitting Service

If your pet is a V.I.P. to you.  
They are a V.I.P. to me too!!

Call Lorraine on

01224 - 734 139 or 07875 542 284

## WINE RAKS

1 Urquhart Road, Aberdeen AB24 5LU Tel. 01224 630496

OPEN

Mon-Thurs 11am-9pm  
& Fri-Sat 10am-10pm

[www.wineraks.com](http://www.wineraks.com)

Online secure website shopping in the comfort of your own home.

SIMPLY THE BEST!

WINE RAKS - the Fine wine, Vintage Port and top whisky specialist, as you may know them if you had the pleasure of dealing with them - have re-located to their purpose built wine cellars to house their range of fine wines at the above address and are offering the very same high quality range of products and personal service that used to be available from their former location at 21 Springfield Road, Aberdeen.

## WHAT'S ON LOCALLY

There are a couple of new items in this edition -- Dramatic Diversity and the South Deeside Under Fives groups.

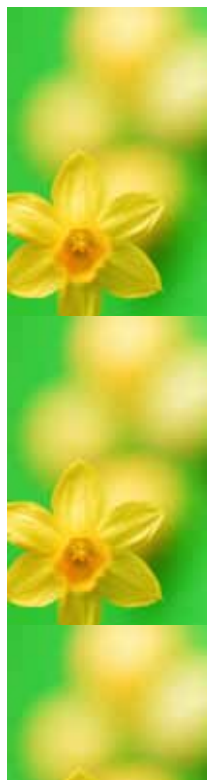
Thanks to everyone who has sent me information about changes to contact details. Please remember also to let me know if you want to add or delete an activity - this listing is only as good as the information you give me.

Isn't it wonderful to think that spring is coming soon? Get out there and enjoy it!

Eleanor Brennan, Tel 862262,  
email: [brennaneleanor@yahoo.co.uk](mailto:brennaneleanor@yahoo.co.uk)

## ABBREVIATIONS FOR THE VENUES

- CA - Cults Academy
- CAP - Cults Academy Pool
- CCC - Cults Community Centre, Earlsells Road
- CPC - Cults Parish Church
- CSC - Culter Sports Centre
- DCFC - Deeside Christian Fellowship Church, Milltimber
- HCC - Hillview Community Church
- KCC - Kingswells Community Centre
- KMCC - Kaimhill Community Centre
- MCAH - Milltimber Community Association Hall
- MPS - Milltimber Primary School
- PCH - Peterculter Church Hall
- PVH - Peterculter Village Hall
- SCC - Scout Centre, South Ave, Cults
- SCPT - Scout Centre, Pitstruan Terrace, Aberdeen
- SDCH - St. Devenick's Church Hall, Bielside
- SHE - Simeon Home for the Elderly, Cairnlee Road
- SMH - St. Martin's Hall, Cairnlee
- SPHH - St. Peter's Heritage Hall, Peterculter
- SWP - Shell Woodbank, Pitfodols
- WRIH - WRI Hall, Kirk Crescent, Cults
- WSC - Waldorf School, Craigton Road, Cults



Lava Jewellery Design

Collections  
Commissions  
Wedding



Exclusive jewellery designed & made for you.  
Fitted & shaped wedding rings our speciality.

Tues-Fri 9.30am-5.30pm Sat 9.30am-2pm  
(Appointments available at all other times.)

Tel: 01224 735 000

[www.lavajewellery.co.uk](http://www.lavajewellery.co.uk)

New studio now open

265 North Deeside Road, Peterculter, AB14 0UL

# Fitness, Sport and Dance

## **BADMINTON - JUNIOR, CA**

Saturdays, 1.30 - 5.30pm September to April  
Contact Dorothy Daldry, Tel : 865984

## **BADMINTON - ADULT, CA**

Tuesdays, 7.30 - 10.00pm  
Contact Rob Wheadon, Tel : 323711

## **BADMINTON - SOCIAL, MCAH**

Mondays, 1.30 - 3.00pm  
Wednesdays, 10.00am - 12.00noon  
Contact Marion Anderson, Tel : 732505

## **CULTS BOWLING CLUB**

All ages very welcome  
Summer Bowling, Winter Activities  
Contact David Steele, Tel : 868485

## **CANOE CLUB, CAP**

Fridays, 7.50 - 10.00 p.m.  
Saturdays 4.00-6.00 p.m.  
Contact Jim Kinnear 313149 or  
Kenny Brown, Tel. 07788-507275

## **CULTS CRICKET CLUB**

Contact Ian Sutherland, Tel : 742833

## **CULTS FIT FOLK, HCC**

For men and women over 55.  
Wednesdays 10.00-11.00 am  
Contact Ellie Whyte, Tel : 861204

## **CULTS HILLWALKING CLUB, CCC**

Indoor session 1st Thurs of month, 7.30 - 9.30 p.m.  
Walks on Sundays, 10 days after the meeting!  
Contact Andy Roberts, Tel. 733710 or Jim Howie, Tel. 733954

## **FLEX 'n STRETCH, CSC**

Thursdays 7.30-8.30pm  
Varied fitness levels  
Contact Anne Low, Tel : 868553

## **BOYS' FOOTBALL CLUB, CCC**

Under 14s football.  
Wednesdays, 7.30-9.00pm  
Contact Gillies MacDonald, Tel 861097

## **FOOTBALL IN THE COMMUNITY, CSC**

Wednesdays, CSC, 4.00-5.00pm 5-8 year olds  
Contact Dons in the Community -  
Tel : 650472 or 650432

## **PRE-SCHOOL FOOTBALL (KCC)**

Mon, 1.00-1.30 p.m., 1.30-2.00 p.m., 2.00-2.30 p.m.  
Fri, 9.30-10.00 a.m. 10.00-10.30 a.m. 1.30-2.00 p.m.  
(Classes also available at Airyhall Community Centre)  
Contact Alison McLeod Tel 314669

## **CULTER YOUTH FOOTBALL CLUB**

Boys' and Girls' Teams, aged 6 to 19 years  
Training most days  
Contact : Contact: Mick Thornton 734228 or  
Gavin Fisher, 734332

## **GRAMPIAN CARDIAC REHABILITATION ASSOCIATION**

Exercise classes at Kippie Lodge, Milltimber, RGU  
Sports Garthdee and other venues in Aberdeen  
Contact Douglas Pacitti, Tel: 01569 763372  
e: d.pacitti@gcra.org.uk or speak to the Cardiac  
Nurse at Cults Surgery w: www.gcra.org.uk

## **KARATE, CCC**

Thursdays 7.30 - 8.30pm  
Fridays 4.30 - 5.30pm  
Contact Ronnie Watt, Tel : 734607

## **KEEP FIT CLASS, CWC**

Tuesdays, 10 - 11am  
Gentle Exercise for the over 60s  
Contact Pam Henderson, Tel 868862

## **FRISKIS & SVETTIS- SWEDISH STYLE KEEP FIT**

Mondays 7.30 p.m., HCC, medium (Rosey)  
Wednesdays 7.30 p.m., HCC, medium (Christine)  
Thursdays 9.30 a.m., HCC, basic (Gavin)  
Saturday 11.00 a.m., HCC, medium (Rota)  
For more information contact Christine, 861450,  
Gavin, 824722 or Rosey, 310380  
Just turn up - no need to sign up for a block -  
everybody welcome

## **PILATES (CALL SOLVEIG FOR EXACT TIMES)**

Peterculter Sports Centre  
Mon. afternoon, Tues afternoon/evening, Thurs.  
evening  
Camphill School, Murtle  
Wed. evenings  
Cults West Church Hall  
Fri. mornings  
All classes must be booked in advance.  
Contact Solveig Dahle Smith, Tel. 861421  
solveig@pilatesaberdeen.com  
www.pilatesaberdeen.com

## **SOCCER FOR 5-12 YEAR OLDS, CCC**

Wednesday afternoons, term time only  
3.30-4.15 Boys and Girls aged 5-7  
4.15-5.00 Boys and Girls aged 8-10  
5.00-6.00 Boys and Girls aged 5 and over  
Contact Ian Wilson - Tel : 07770-996767

## **SOCCER FOR OVER 30'S, CCC**

Thursdays, 8.30-10.00pm  
Contact Alistair Brown - Tel : 861314

## **PETERCULTER SPORTS CENTRE**

Coronation Road, Peterculter Tel : 732069  
Fitness studio, aerobics classes, creche  
Monthly membership or ad hoc prices

## **CULTS OTTERS SWIMMING CLUB, CAP**

Open to children aged 4 to 13  
Learn to Swim Section & Junior Coaching Sections  
Contact Sonia, Tel : 316854 or  
email : lts@cultsotters.co.uk  
website : www.cultsotters.org.uk

## **SWIMMING - LIFESAVING CLUB (ADULTS 14+/ROOKIES/JUNRS 10+)**

Mondays 6.30-9.30pm  
Contact Anne Gwynne - Tel : 868846

## **WEEKEND SWIMMING AT CULTS ACADEMY POOL**

9.00-12noon, Sat and Sun Adults £3.45, Chil-  
dren Half Price, Free entry with an Accord card.  
Swimming will continue during school holidays.  
Contact Ron Wright, Tel: 867398

## **TAI CHI, CPC**

Wednesdays, 7.45-9.45pm  
Contact Don Wells - Tel : 310904

## **TAI CHI, SMH**

Mondays, 1.00-2.30pm  
Contact Neil or Nicolette - Tel : 01330-850675

## **CULTS LAWN TENNIS CLUB**

32 Abbotshall Place, Cults  
See separate item in MBC News for full details  
Contact Maggie MacLennan (Sec), Tel. 861485 or  
Gareth Rennie, Mob. 07714-753607.

## **WOODBURN WALKERS - RAMBLING FOR 50+**

Meet alternate Tuesdays at Hazlehead Bus  
Terminus, Travel by hire bus  
Average walk +/- 7 miles  
Contact Eleanor - 317197 or Margaret - 319741

## **YOGA, WSC**

Beginners welcome  
Wednesdays, 7.00 - 8.30 p.m.,  
Contact Fiona Britee, Tel. 487712

## **YOGA, WSC**

For intermediate students  
Mondays, 7.40 - 9.30 p.m.,  
Contact Marian van Oorschot, Tel. 863985  
E-mail marianoorschot@mac.com

# Dancing

## **ABERDEEN KILT KICKERS AMERICAN SQUARE DANCE CLUB**

Beginners - Mondays 7.30 - 9.30 pm (WRIH)  
Contact Sandra Allen, Tel. 715181

## **RAGGIE MORRISON'S LADIES CLOG DANCING, SDCH**

Ladies of all ages and beginners especially  
welcome.  
Meet Wednesdays 7.45 - 10.00 pm  
Contact Rosemary Crabbe-Wyke - Tel : 07950-  
086739 or Moira Skingley - Tel : 867801

## **ST DEVENICK'S DANCERS, SDCH**

Scottish Country Dancing and Highland Dancing  
for primary school children.  
Tuesdays, 3:45pm - 5:15pm  
Contact Judith Riddoch, Tel 865909  
Email judithriddoch@aol.com

## **TAYLOR SCHOOL OF DANCE, MCAH**

Recreational, Vocational & Adult classes available  
Classical Ballet, Modern Theatre, Tap, Jazz, Street  
Jazz, Musical Theatre Dance,  
Boys Only Street Moves, Zumba  
Contact Gael Thomson, Mob. 07531-811506  
E-Mail - admin@taylordance.com  
w: www.taylordance.com

## **KAREN BERRY SCHOOL OF DANCE**

Classes for children and adults available in  
Cults and Peterculter  
For details see website www.danscentre.com  
or contact Karen Berry, Tel. 647341

## **GENTLE EXERCISE, INCL DANCE, CPC**

Thursdays, 2.30 - 3.30 p.m.  
Sept. to Dec., Jan. to Mar.  
Contact Fiona Murray, Tel. 702305

## **LINE DANCING, WRIH**

Tuesdays, 10.00-11.00am Sept - June  
All levels welcome  
Contact Ethel McHardy - Tel : 868538

## **MAINLY MUSIC, HCC**

Caregivers and Toddlers (0-4). Dance, rhyme  
and rhythm,  
Refreshments and toys.  
Thursdays, 9.30 - 10.30 a.m.  
Contact Laura Hayes, Tel. 744295

## **SCOTTISH COUNTRY DANCING, MCAH**

Wednesdays - 8.00-9.30pm  
All ages and beginners welcome  
Margaret Athawes, Tel. 733622

## **SCOTTISH COUNTRY DANCING, WRIH**

Tuesdays, 7.30 - 9.30 p.m. (mid Sept. to end  
March)  
Contact Sheila Fyfe, Tel. 868164

## **SCOTTISH COUNTRY DANCING, SDCH**

Tuesdays, 4.00 - 5.00 p.m. for primary school  
children  
Contact Judith Riddoch, Tel. 865909  
Email judithriddoch@aol.com

# Children & Youth Groups

## AIR TRAINING CORPS

107( Aberdeen ) Squadron,  
Prince Charles Cadet Centre, Albury Road ,  
Ferryhill, AB11 6TL  
Parade Mon & Wed 19.00-21.30hrs. Open to  
Boys and Girls aged 13-17  
w: [www.107aircadets.org](http://www.107aircadets.org)  
e: [107@aircadets.org](mailto:107@aircadets.org) Tel. 590679

## BUOYANCY SWIM, CAMPHILL SCHOOL, BIELDSIDE

30 minute sessions, Tues.12.30 – 15.00  
Thurs. 12.30 – 14.00, Fri. 12.30-16.00  
Adult and Baby (3-12 months), Adult and Toddler (1-2  
years), Adult and Child (2+ years),  
Pre school (4 years + without their parent in the pool).  
Contact Julie McQuillan, Tel. 318651, Mob. 07906  
863246 or email: [buoyancy@btinternet.com](mailto:buoyancy@btinternet.com)

## CASPER AFTER SCHOOL CLUB, CCC

Contact Marion Skea - Tel : 07762-250550

## MILLTIMBER AFTER SCHOOL CLUB, MPS

Mon. – Fri., 2.45 to 6.00 p.m.  
Contact Samantha Birch, Mob. 07890-862774

## PARENT AND TODDLER GROUP, CWC

Wednesdays, 9.30 – 11.30 a.m.  
Contact Lindsey Newton: 868727  
Thursdays, 9.30 – 11.30 a.m.  
Contact Andrea Vlaar, Tel: 865470 or  
e-mail [a.vlaar@abcol.ac.uk](mailto:a.vlaar@abcol.ac.uk)

## PARENT AND TODDLER GROUP, DCFC

Tuesdays 9:45 a.m. – 11.30 a.m.  
Contact Pauline Cordiner, Tel. 730171

## PARENT AND TODDLER GROUP, MCAH

Fridays 9.30-11.30 a.m. (term times)  
Contact Susan Ronald, Tel. 735204  
Email [paulronald@talktalk.net](mailto:paulronald@talktalk.net)

## CULTS PLAYGROUP, CPC

Mon, Tues, Thurs, 9.15-11.45am (From 2½ years)  
Rising 5's - Afternoon Sessions  
Contact Amanda - Tel : 861982

## DRAMATIC DIVERSITY, MCAH.

Drama class for children and young people,  
Contact Lizzy Hawkey, Mob. 07718882382.

## BILINGUAL PARENT AND CHILD GROUP

Wed. and Frid.9.15am to 11.10am.  
Gilcomstoun Primary School  
Babies and toddlers introduced to Gaelic through  
arts, crafts, play and song. You don't have to speak  
Gaelic to attend.  
Tel 0777 939 8289, [croileagan@gmail.com](mailto:croileagan@gmail.com).  
Facebook: Croileagan Obar Dheathain.

## MILLTIMBER PLAYGROUP & RISING 5'S, MCAH

Mon, Tues, Thurs, Fri., 9.30 a.m.- 12.00 p.m.  
Lunch club Tues, Fri. 12 – 1300 pm (Term times only)  
Rising 5's Fri 1.00 -3.00 (Tues Rising 5's  
coming soon) Nursery transport options  
available. Contact Lyndsay Hay, 07519-  
902470, e: [milltimberplaygroup@hotmail.com](mailto:milltimberplaygroup@hotmail.com)

## Rising 5s,

Fri 1.00-3.00 (Tues Rising 5's coming soon)  
Nursery transport options available. Contact  
Lyndsay Hay, 07519 902 470  
Email [milltimberplaygroup@hotmail.com](mailto:milltimberplaygroup@hotmail.com)

## PLAYGROUP AND RISING 5'S, DCFC

Mon, Wed, Thurs. 9.15- 11.45 a.m. Mon. 1.00 - 3.30 pm  
Contact Rhona Magowan Tel: 733350

## ST DEVENICK'S PLAYGROUP AND RISING 5S, SDCH

Playgroup: Monday – Friday, 9.20am – 11.50 a.m.  
Lunch club, Wednesday 11.50am – 1.00 p.m.  
Rising 5s, Tuesday and Thursdays, 12.30 – 3.00 p.m.  
Contact Julie, Tel. 868644 or Playgroup, Tel. 07931  
223545 e: [stdevenicksplaygroup@googlemail.com](mailto:stdevenicksplaygroup@googlemail.com)

## SOUTH DEESIDE UNDER FIVES

Fun and friendly childcare for children from birth to  
five years Maryculter Community Hall (next to the  
Old Mill Inn), South Deeside Road  
Baby & Toddler Group – Mondays 9.30am to 11.30am  
Twos Group – Wednesdays, Thursdays and Fridays  
9.30am to 11.30am , Rising Fives – Tuesday lunch-  
times 12 noon to 2pm  
Mob: 07966 163953  
E: [info@south-deeside-under-fives.co.uk](mailto:info@south-deeside-under-fives.co.uk)  
W: [www.south-deeside-under-fives.co.uk](http://www.south-deeside-under-fives.co.uk)

## TOTS AND TODDLERS, SDCH

Wednesdays, 2.00 – 4.00 p.m.  
Contact Michelle, 861755

## EXPLORERS P1-P3 GROUP, DCFC

Wed. 6.30 -7:30 p.m.  
Contact Luke Dale, Tel. 733979

## CHALLENGERS P4-P7 GROUP, DCFC

Wednesdays 7:30 -8.30p.m.  
Contact Luke Dale, Tel. 733979

## ASCEND, HCC

Youth Group for S1-6, Grades 7-12  
Sundays: 7.00 -9.00 p.m.  
Email- [info@hillview.cc](mailto:info@hillview.cc)

## GUIDES, BROWNIES AND RAINBOWS

**1st Cults Rainbows, CPC**  
Mondays, 4.00 - 5.00 p.m.  
Contact Claire Moore, Tel 869039

## **3rd Cults Rainbows, CPC**

Fridays, 4.30 - 5.30 p.m.  
Contact Morag Williamson Tel: 867967

## **1st Cults Brownies, CA**

Mondays, 6.15 - 7.30 p.m.  
Contact Dorothy Forbes, Tel 486357

## **2nd Cults Brownies, HCC**

Tuesdays, 6.15 - 7.30 p.m.  
Contact Jill Sutherland, Tel 734540

## **3rd Cults Brownies, CCC**

Tuesdays, 6.15 - 7.30 p.m.  
Contact Jan Mackintosh Tel: 865916

## **1st Cults Guides, CA**

Mondays, 7.30 - 9.00 p.m.  
Contact : Karen Pether, Tel 734527

## **2nd Cults Guides, HCC**

Thursdays, 7.30 - 9.00 p.m.  
Contact Anne O'Neill, Tel 861467

## **Milltimber Rainbows, MCAH**

Thurs 4.15 – 6.15 p.m.  
Contact Alison Garden, Tel. 868821

## **Milltimber Brownies, MCAH**

Wednesdays. 6.00 -7.30 p.m.  
Contact Elaine McGuffie, Tel. 733636

## **District Commissioner for Cults**

- Jan Mackintosh, Tel. 865916

## **District Commissioner for Milltimber and Culter**

- Elaine McGuffie, Tel. 733636

## **Divisional Commissioner for Cults, Milltimber and**

**Culter** - - Dorothy Forbes, Tel. 486357

## BEAVERS, CUBS AND SCOUTS

### **Beavers, Cubs and Scouts, MCAH**

Beavers - Mondays 4.15 - 5.15pm  
Contact Fiona Douglas, Tel: 735523

Cubs - Tuesdays 6.30 - 8.00pm

Contact Barbara Stroud, Tel: 732591

Scouts - Fridays 7.30 - 9.30pm

Contact Geoff Weighill, Tel: 869115

### **21ST ABERDEEN (CULTS) SCOUT GROUP, SCC**

**Beavers** - Wednesdays, 4.30 - 5.30 p.m.

Open to boys and girls aged 6 to 8  
Contact Karen Southworth, Tel 869557

**Cubs** – Thursdays, 7.00 - 8.30 p.m.

Open to boys and girls aged 8 to 10  
Contact John Evans, Tel 07834-521519

**Scouts** - Fridays, 7.30 - 9.30 p.m.

### **Deeside Explorer Scouts**

Deeside Explorer Scouts  
Every second Monday 8.00 -10.00 p.m.  
Open to boys and girls, aged 14 to 17  
Contact Isobel Cameron Tel 869393

### **65TH ABERDEEN (MILLTIMBER) SCOUT GROUP, MCAH**

**Beavers** - Mondays 4.15 - 5.15pm

Contact Fiona Douglas, Tel: 735523

**Cubs** - Tuesdays 6.30 - 8.00pm

Contact Barbara Stroud, Tel: 732591

**Scouts** - Fridays 7.30 - 9.30pm

Contact Geoff Weighill, Tel: 869115

### **Youth Hockey Coaching**

on Tuesday evenings for P4 to S4 by Gordonians  
Hockey Club at Robert Gordon's College astrotrurf  
pitches on Countesswells Road from 5.15pm to  
6.30pm. Children from all schools are welcome and  
sticks can be provided. Coaching resumes on 30th  
August 2011 for the season

Has your local group done anything  
spectacular this last few month's?  
An unusual way of fundraising...a good turn  
for the neighbourhood...just had a really  
good couple of months.  
Let us know at MBC News as we'd love to  
publish it for you. Even better if you have  
some photographs to highlight it.  
Send to Maureen the Editor  
see page 2 for details ...  
Get thinking... Get writing... and send it.

# Hobbies and Social

## **CULTS O50 CLUB, CPC**

Wednesdays, Lunch from 12.00  
Announcements/speaker 12.45  
Other activities include bridge and scrabble, walks, theatre, cinema, local history outings, garden visits, art appreciation, a book group – the list is endless!  
Open to anyone over 50, not only Cults residents  
Details of activities on the website  
<http://www.cultsparishchurch.co.uk/O50/Index.htm>  
or contact Lizzie Thomas, Tel. 869413 or  
Anne Wilcox, 869276

## **MILLTIMBER O50 CLUB, MCAH**

Meet monthly in the winter on Wed. 2.00 – 4.00 p.m. for talks.  
Other social events include walks, cycle rides, theatre visits, outings, garden visits, lunch outings and city breaks.  
Annual favourites are BBQ, Games night and a Christmas Party.  
Open to anyone in the Milltimber vicinity.  
Contact John Park, Tel. 733057 or Robin Dyer, Tel 733850 or website  
<http://www.genbase.co.uk/MilltimberO50/>

## **ADULT ART CLASSES, HCC**

Wednesdays, 1.30 - 3.30 p.m.  
Contact Jenny Hunter, Tel. 07751715343

## **ABERDEEN BRIDGE CLUB**

14 Rubislaw Terrace, Tel : 644773  
Monday to Thursday - 7.00-10.00pm  
Adult Lessons Wed - 7.00pm Sept - April

## **BRIDGE GROUP, CCC**

Tuesdays, 7.00-9.30pm  
Contact Irene Main - Tel : 318167

## **CULTER BRIDGE CLUB, PVH**

Fridays, 1.15 – 4.00 pm Sept.- April  
Contact Peter Garioch Tel : 324691

## **CALLIGRAPHY GROUP, CPC**

Thursdays 10.00- 12.00 p.m.  
(2 x 10 week sessions from Sept & Jan)  
Contact Isobel Archibald, Tel. 867303

## **THE HUB COFFEE SHOP, COC**

Tuesdays and Wednesdays - 10.00-3.00pm

## **MILLTIMBER COMMUNITY ASSOCIATION, MCAH**

Wide range of activities for all ages.  
General enquiries - Sue Smedley 732172.  
To hire the hall - 07502 040 619.

## **CRAFT AND NEEDLEWORK CLASS, NORTH HALL, CWC**

Fridays, 1.30 p.m. – 3.30 p.m. 10 weeks  
£50.00 Beginners and more experienced catered for Contact Yvonne Weir, Tel. 732098 /  
Yvonne.weir@virgin.net

## **DEESIDE CHORISTERS, CCC**

Wednesdays, 6.30-8.00pm  
New members most welcome  
Contact Nancy Paul - Tel : 741378

## **DRESSMAKING GROUP, KMCC**

Thursdays, 09.30-11.30 a.m.  
Couture trained tutor  
Beginners welcome  
Phone Kaimhill Community Centre, Tel. 311996

## **FOLK EVENING, CPC**

Monthly on the 2nd Friday, 7.30pm Sept - June, Both musicians and listeners most welcome! Bring your own beverage!  
Contact Jan Johnson, Tel : 867951

## **ABERDEEN GAELIC CLUB**

Brings together Gaelic speakers and individuals interested in Gaelic language and culture. The Club organises Gaelic language evening classes and weekend courses in Harlaw Academy, plus social activities.  
Tel 07779-398289, e-mail clubgaidhlig@googlemail.com or  
[www.aberdeengaelic.wordpress.com](http://www.aberdeengaelic.wordpress.com).

## **CULTS LIBRARY**

See separate item in MBC News for opening times and details of the wide range of courses and activities on offer.

## **CULTS LUNCH CLUB, CPC**

Mondays 12.00-2.00pm (except for July) New members most welcome.  
Contact Jackie Hatchwell, Tel : 861736

## **MODEL CLUB - ADULT CCC**

1st Tuesday of the month, 7.30 – 10.00 p.m.  
Contact Martin Smith, Tel. 01467 642919

## **PETROLEUM WOMEN'S CLUB**

International friendship club for women connected to the oil industry. Meetings with speaker, 1<sup>st</sup> Thursday of the month  
Coffee mornings, 3<sup>rd</sup> Thursday of the month.  
Many sub-groups such as ten pin bowling, walks, bridge, golf, dinner club, French conversation and a book group.  
Contact Elaine Anderson, Tel. 867736 or Rosalind Barker, Tel. 747802  
or email [pwscotland@yahoo.co.uk](mailto:pwscotland@yahoo.co.uk)

## **ROTARY CLUB OF ABERDEEN DEESIDE**

Wednesday's 6.15 for 6.45 pm in the Cults Hotel. For further information contact the secretary Quentin Tweedie on 01224 868218 email [qtweedie@btconnect.com](mailto:qtweedie@btconnect.com)

## **SALTIRE SOCIETY**

Promotes all things Scottish. Meets monthly on Tuesdays, normally in Rubislaw Parish Church. (See article in magazine for details)  
Contact D J Robertson, Tel. 484061

## **SCRABBLE CLUB, MCAH**

Fridays, 2.00-4.00pm  
Players at any level are very welcome  
Contact Joan Thomas - Tel : 733218

## **CULTS STRATHSPEY & REEL SOCIETY, CPC**

Meet every 2nd Wednesday, 7.30 -9.00 p.m.  
Accordianists and violinists welcome  
Contact Fred Robertson, Tel. 310970

## **ABERDEEN TOASTMASTERS (PUBLIC SPEAKING CLUB)**

Meets at Northern Arts Club (NAC), 1st, 3rd, 5th Thursdays of every month - 7.00-9.00pm  
Visitors are welcome - no cover charge.  
Website : [www.aberdeentostmasters.org.uk](http://www.aberdeentostmasters.org.uk)  
Contact Matthew Mtumbuka - Tel : 861028  
Email : [matthews@mtumbuka.com](mailto:matthews@mtumbuka.com)

## **SCOTTISH WOMEN'S RURAL INSTITUTE, WRIH**

1st Thursday of every month, 7.30-9.30pm (Not July or August)  
Contact Helen Johnston, Tel : 867726 or Lyn Pithie, Tel : 867614

## **GRAMPIAN WOODTURNERS, SDCH**

Meet last Sunday in the month, 2.00 p.m.  
New members are most welcome.  
Meetings consist of member participation, demonstrations etc.,  
Contact Bill Diack, Tel. 01467-622772

## **STOP PRESS**

Italian classes will now be taking place at Hillview Community Church, Earlsells Road Cults instead of Cults Academy or Cults Community Centre. The contact no. is 863964 (Enrica Conti).



**Taylor**  
school of dance

## CLASSES

**KIDS**

- BABIES & PRE-SCHOOL BALLET
- BALLET
- MODERN THEATRE
- JAZZ
- TAP
- BOYZ ONLY STREET MOVES (PRIMARY, JUNIOR & SENIOR CLASSES)
- GIRLZ STREET JAZZ
- MUSICAL THEATRE
- CONTEMPORARY
- ZUMBATOMIC (AGE 4-12) **NEW!**

**ADULTS**

- PARENT & TODDLER DANCE
- ZUMBA FITNESS

A: TAYLOR SCHOOL OF DANCE, MCA HALL, THE MEADOWS, MILLTIMBER, ABERDEEN  
T: 07502 04061 | E: ADMIN@TAYLORDANCE.COM | WWW.TAYLORDANCE.COM

**ZUMBA** **zin**

# HOME REPORT SCOTLAND

For all types of residential surveys & valuations.

## CALL NOW FOR :

-  HOME REPORTS
-  MORTGAGE VALUATIONS
-  PRE - SALE SURVEYS
-  ESTATE VALUATIONS
-  ENERGY PERFORMANCE CERTIFICATES



Cert. number 8887 - ISO 9001

